



NIGERIAN NATIONAL PETROLEUM CORPORATION

MONTHLY PETROLEUM INFORMATION

THIRD QUARTER, 2005

SUMMARY OF OIL AND GAS INDUSTRY ACTIVITIES FOR THE THIRD QUARTER, 2005

1.0 EXPLORATORY/DRILLING ACTIVITIES

During the Third Quarter 2005, a total number of forty six (46) wells were drilled by seven (7) Oil Producing companies in Nigeria. Out of these wells, forty-four (44) were Development and two (2) were Appraisal. Of the Development wells, twenty one (21) were completed, Twenty (20) were in Drilling Progress while three (3) were suspended. (See table 1 for more details)

2.0 CRUDE OIL AND CONDENSATE

2.1 Production:

Total Crude Oil and Condensates produced in Third Quarter 2005 stood at 232,879,492 barrels averaging 2.531 million barrels per day (mbd). Shell Petroleum Development Company (SPDC) had the highest production of 84,553,742 barrels or 919,062 barrels per day, which is 36.31% of the three (3) months total production. Mobil came second with the production level of 56,587,009 barrels (615,076 b/d), which is 24.30% of the total production. Chevron had the production level of 32,102,423 barrels (348,939 b/d) while Elf had 18,264,726 barrels (198,530 b/d) with 13.78% and 7.84% percentage contribution to the Third Quarter 2005 total production respectively.

The Oil Producing Companies with their Production figures, average daily production and percentage in descending order are shown below. (See table 3 for more details).

Table (a) CRUDE OIL PRODUCTION BY COMPANY

<i>Company</i>	<i>Quantity (barrels)</i>	<i>Ave Daily Prod.(B/D)</i>	<i>Percentage Share (%)</i>
<i>Shell</i>	<i>84,553,742</i>	<i>919,062</i>	<i>36.31</i>
<i>Mobil</i>	<i>56,587,009</i>	<i>615,076</i>	<i>24.30</i>
<i>Chevron</i>	<i>32,102,423</i>	<i>348,939</i>	<i>13.78</i>
<i>Elf</i>	<i>18,264,726</i>	<i>198,530</i>	<i>7.84</i>
<i>NAOC/Philips</i>	<i>15,449,392</i>	<i>167,928</i>	<i>6.63</i>
<i>Addax</i>	<i>6,832,007</i>	<i>74,261</i>	<i>2.93</i>
<i>NPDC/AENR</i>	<i>4,985,007</i>	<i>54,185</i>	<i>2.14</i>
<i>Continental Oil</i>	<i>3,293,824</i>	<i>35,802</i>	<i>1.41</i>
<i>NAE</i>	<i>2,899,879</i>	<i>31,520</i>	<i>1.25</i>
<i>Pan Ocean</i>	<i>2,219,782</i>	<i>24,128</i>	<i>0.95</i>
<i>Moni pulo</i>	<i>1,722,909</i>	<i>18,727</i>	<i>0.74</i>
<i>Texaco</i>	<i>1,362,489</i>	<i>14,810</i>	<i>0.59</i>
<i>AENR</i>	<i>1,115,547</i>	<i>12,126</i>	<i>0.48</i>
<i>NPDC</i>	<i>370,561</i>	<i>4,028</i>	<i>0.16</i>
<i>EPGA/CONOCO</i>	<i>284,932</i>	<i>3,097</i>	<i>0.12</i>
<i>Cavendish Petroleum</i>	<i>234,092</i>	<i>2,544</i>	<i>0.10</i>
<i>ATLAS</i>	<i>188,489</i>	<i>2,049</i>	<i>0.08</i>
<i>CONOIL</i>	<i>185,270</i>	<i>2,014</i>	<i>0.08</i>
<i>AMNI</i>	<i>184,132</i>	<i>2001</i>	<i>0.08</i>
<i>DUBRI</i>	<i>43,280</i>	<i>470</i>	<i>0.02</i>
TOTAL	232,879,492	2,531,299	100.00

In the Crude Oil Production Streams slate, Bonny Light had the highest production figure of 44,624,017 barrels, an average of 485,044 barrels per day or 19.16% of the total crude

stream. This was followed by Forcados Blend with Production figure of 37,048,191 barrels, an average of 402,698 barrels per day or 15.91%. Qua-Iboe light came third with production figure of 36,872,280 barrels, an average of 400,786 barrels per day or 15.83%. Oso condensate accounted for 5,159,854 barrels (56,085 b/d) representing 2.22% of the total crude oil streams produced in the quarter under review. (See table 3 for more details).

Crude Oil streams with corresponding production level, average daily production and percentage contribution to total production in descending order are given below.

Table B: CRUDE OIL STREAM WITH PERCENTAGE (%) CONTRIBUTIONS AND DAILY PRODUCTION AVERAGES IN THIRD QUARTER 2005

<i>Crude Stream</i>	<i>Quantity (barrels)</i>	<i>Ave Daily Prod.(B/D)</i>	<i>Percentage Contribution (%)</i>
<i>Bonny Light</i>	<i>44,624,017</i>	<i>485,044</i>	<i>19.16</i>
<i>Forcados Blend</i>	<i>37,048,191</i>	<i>402,698</i>	<i>15.91</i>
<i>Qua-Iboe Light</i>	<i>36,872,280</i>	<i>400,786</i>	<i>15.83</i>
<i>Escravos Light</i>	<i>28,459,199</i>	<i>309,339</i>	<i>12.22</i>
<i>Brass Blend</i>	<i>17,986,690</i>	<i>195,508</i>	<i>7.72</i>
<i>Yoho (AF)</i>	<i>14,554,875</i>	<i>158,205</i>	<i>6.25</i>
<i>EA Crude (AF)</i>	<i>10,441,507</i>	<i>113,495</i>	<i>4.48</i>
<i>Amenam (AF)</i>	<i>9,246,119</i>	<i>100,501</i>	<i>3.97</i>
<i>Amenam Blend</i>	<i>6,829,289</i>	<i>74,231</i>	<i>2.93</i>
<i>Antan Blend</i>	<i>6,132,992</i>	<i>66,663</i>	<i>2.63</i>
<i>Oso Condensate</i>	<i>5,159,854</i>	<i>56,085</i>	<i>2.22</i>
<i>Okono</i>	<i>4,985,007</i>	<i>54,185</i>	<i>2.14</i>
<i>Pennington Light</i>	<i>4,656,313</i>	<i>50,612</i>	<i>2.00</i>
<i>Abo</i>	<i>2,899,879</i>	<i>31,520</i>	<i>1.25</i>
<i>OKWB</i>	<i>2,091,635</i>	<i>22,735</i>	<i>0.90</i>
<i>Ukpokiti</i>	<i>473,421</i>	<i>5,146</i>	<i>0.20</i>
<i>Obe</i>	<i>234,092</i>	<i>2,544</i>	<i>0.10</i>
<i>Ima</i>	<i>184,132</i>	<i>2,001</i>	<i>0.08</i>
TOTAL	232,879,492	2,531,299	100

2.2 Crude Oil and Condensate Lifting

The total Crude Oil and Condensate lifted for domestic purposes and export in the Third Quarter of 2005 stood at 234,291,185 barrels, which averaged 2.547 million barrels per day but only 232,879,492 barrels was produced. The balance of 1,411,693 barrels was taken from the stock. Crude oil production quota for Nigeria which was 2.265 mbd as at June ending 2005 increased to 2.306 mbd by July 05 2005. This increase as agreed by OPEC was to satisfy increasing global demand and douse market volatility with attendant high prices. Nigerian National Petroleum Corporation (NNPC) lifted 119,052,597 barrels (50.81%) of the total lifting during the quarter for domestic utilization and export. Of the lifting made by NNPC, 72,645,142 barrels were exported for Federation Account, while the balance of 46,407,455 barrels were lifted for domestic purposes. This is made up of 19,198,129 barrels supplied to domestic refineries and 27,209,326 barrels as PPMC export. The Joint Venture, Production Sharing, Service Contract and Independent/Sole Risk Oil Companies lifted 115,238,588 barrels or 49.19% of the total lifting for export. Out of this quantity exported by the Oil Producing Companies, the six (6) Joint Venture Companies exported 95,403,511 barrels or 40.72%. Addax, a PSC, exported 4,351,062

barrels or 1.86% and AENR, a Service contract company exported 3,058,079 barrels or 1.31%. The balance of 12,425,936 barrels or 5.30% was lifted for export by the Independent/Sole Risk Oil companies. (See Table 4).

2.3 Alternative Funding Joint Venture/Carry Crude Oil Lifting:

In the Third Quarter of 2005, 32,702,158 barrels of crude oil were lifted by both NNPC and three (3) Oil Producing Companies namely: Shell, Mobil and Elf. Out of this quantity (32,702,158 barrels), Shell, Mobil and Elf lifted 22,614,673 barrels or 69.15% while NNPC lifted 10,087,485 barrels or 30.85%. The total lifting of 32,702,158 bbls was part of total JV lifting of 211,112,945 bbls for the Quarter. (See table 4 and table below for more details)

Table c Alternative funding/Carry Crude oil lifting.

<i>Crude stream</i>	<i>Beneficiary</i>	<i>Quantity (Barrels)</i>	<i>Percentage Share (%)</i>
<i>EA</i>	<i>Shell</i>	<i>7,556,210</i>	<i>79.94</i>
	<i>NNPC</i>	<i>1,896,411</i>	<i>20.06</i>
	<i>Sub-Total</i>	<i>9,452,621</i>	
<i>YOHO</i>	<i>Mobil</i>	<i>9,843,654</i>	<i>67.48</i>
	<i>NNPC</i>	<i>4,744,790</i>	<i>32.52</i>
	<i>Sub-total</i>	<i>14,588,444</i>	
<i>AMENAM</i>	<i>Elf</i>	<i>5,214,809</i>	<i>60.21</i>
	<i>NNPC</i>	<i>3,446,284</i>	<i>39.79</i>
	<i>Sub-Total</i>	<i>8,661,093</i>	
<i>Grand Total</i>	<i>Companies</i>	<i>22,614,673</i>	<i>69.15</i>
	<i>NNPC</i>	<i>10,087,485</i>	<i>30.85</i>
	<i>Total</i>	<i>32,702,158</i>	

Source: COMD

2.4 Crude Oil Export by Destination:

In the Third Quarter of 2005, a total volume of 215,093,056 barrels of Crude Oil and Oso Condensate were exported by NNPC and Oil Producing Companies to five (5) major regions of the World: North America 99,151,059 barrels or 46.10%; Europe 49,067,175 barrels or 22.81%; Asia and Far East 35,905,085 barrels or 16.69%; Africa 21,396,343 barrels or 9.95%. The remaining 9,573,394 barrels or 4.45% were exported to some countries in South America. (See Table 5 and figure 2).

2.5 Federation Account Crude Oil Export Receipts

The total crude Oil exported by NNPC in the Third Quarter of 2005 for Federation Account was 72,645,142 barrels at a value of US\$4,543,323,665.63 . The export sales reflect an average weighted price of US\$62.5413 per barrel. There was an increase of \$10.86 per barrel or 21% when compared with the US\$51.6859 per barrel recorded in Second Quarter of 2005. This increase was due to continuous rise in crude oil price in the international market which among others was sustained by;

- High global economic growth notably driven by the U.S.A and emerging Chinese and Indian economies.
- Limited refining capacity world-wide.
- Declining non OPEC incremental production.

(See Table 6a and figure 3a)

3.0 NATURAL GAS

3.1 Natural Gas Production and Utilization:

A total volume of 506.631 Billion Standard Cubic Feet (BSCF) of natural gas was produced by nine (9) Oil Producing Companies in the Third Quarter of 2005. Out of the quantity produced, 217.364 Bscf or 42.90% was flared while the remaining 289.267 barrels (57.10%) was utilized as follows: 125.198 Bscf or 24.71% was sold to third parties (this included gas sold to NGC) 82.290 Bscf or 16.24% was re-injected, while 34.44 Bscf or 6.80% was for LNG feedstock. EPCL took 15.660 Bscf (3.09%) and 2.385 Bscf (0.47%) as LPG/NGL feedstock and fuel gas respectively. The Oil Producing Companies used 19.666 Bscf or 3.88% as fuel gas and 9.445 Bscf or 1.86% as gas lift to enhance *condensate production*. (See Table 7).

3.2 Federal Government Receipts from Gas Export:

The sum of US\$66.506 million was realized from export sales of 145,125.731 Metric Ton of NGL and LPG from Mobil and Chevron respectively by NNPC on behalf of Federal Government. The sale represents Federal Government Equity share in Mobil and Chevron Joint Ventureship. Similarly, a total sum of US\$47.238 million was realized from the export sales of 67.983 million BTU of LNG feedstock, representing Federal Government Equity shares in Shell, Elf and Agip Joint Ventureship. A total revenue of US\$113.744 million was realized from Gas export sales in the quarter under review. (See Table 6b and figure 3b).

3.3 Nigerian Gas Company (NGC) Gas Sales and Transmission:

A total volume of 50.945 Billion Standard Cubic Feet (BSCF) of natural Gas was sold at a realizable price of ₦2,399.65 million during the Third Quarter of 2005. However, actual revenue received was ₦1,043.166 million. This revenue includes part of previous years outstanding debt. The Company also transmitted 0.9369 million Standard Cubic Feet of natural gas to third parties for realizable revenue of ₦57.300 million. The actual revenue received from gas transmission in the Third Quarter 2005 was ₦47.836 million. The amount received was lower than expected revenue as a result of indebtedness. (See Table 8a and 8b).

3.4 Joint Venture Domestic Gas Sales:

Shell Petroleum Development Company (SPDC) sold 37.249 Billion Standard Cubic Feet (Bscf) of natural gas for ₦561.938 million on behalf of Joint Venture Partners (NNPC 55%, Shell 30%, Elf 10% and Agip 5%). (See Table 9a).

3.5 Joint Venture Export Gas Sales:

Agip and Shell sold a total 72.434 Billion Standard Cubic Feet (BSCF) of natural gas as feed stock to NLNG at a sum of US\$50.347 million in the Third Quarter. (See Table 9b).

4.0 REFINERY OPERATIONS

4.1 Crude Oil Balance:

In the Third Quarter 2005, the three local refineries (KRPC, PHRC and WRPC) had 473,350mt of crude oil as opening stock and received 2,499,842mt of crude oil into their systems, this includes foreign crude oil (Basra Light). The total crude oil available for processing, therefore, stood at 2,973,192mt. Out of this, 2,394,053mt of crude oil was

processed into petroleum products. The closing stock at the end of the Quarter was 579,139mt of crude oil. The average daily throughput for each refinery in metric tons per day was: KRPC – 4,696; PHRC – 12,392 and WRPC – 8,934 (see Table 10); thus leaving their respective capacity utilization for the Quarter as 31.43%, 43.30% and 54.07% respectively. (See figure 5).

4.2.1 Production Returns:

The three (3) refineries – KRPC, PHRC and WRPC produced 2,131,680mt of intermediate and finished products as against a volume of 2,135,452mt evacuated by PPMC during the quarter (See Table 13).

4.2.2 Refinery Fuel and Loss:

During the Quarter, the three (3) refineries recorded 282,612mt of products as refinery fuel and loss, which was 11.80% of the total crude processed by the refineries. 218,270mt (9.12%) of various products was used as fuel, while 40,610mt (1.70%) was the quantity of gas flared. The remaining 23,732mt (0.99%) was recorded as losses (See Table 14).

5.0 DOMESTIC PETROLEUM PRODUCTS DISTRIBUTION:

During the Third Quarter 2005, the Major and Independent Petroleum Products Marketing Companies distributed a total of 3,444.53 million litres of different petroleum products. This showed an increase of 78.99 million litres or 2.35% when compared with the total volume distributed in the second quarter, 2005 (3,365.541 million litres). The Major Petroleum Products Marketing Companies sold 1,868.76 million litres (54.25% of the total sales) of petroleum products, while the Independent Petroleum Products Marketing Companies sold the remaining 1,575.77 million litres (45.75% of the total sales). In the petroleum products distribution slate, Premium Motor Spirit (PMS) had the highest figure of 2,055.82 million litres (59.68% of the total) reflecting average daily sales of 22.36million litres. Premium Motor Spirit (PMS) was followed by Automotive Gas Oil (AGO) with total sales figure of 718.11 million litres (20.55%) averaging 7.81 million litres per day. Dual Purpose Kerosine (DPK) came third in the petroleum products distribution slate with total sales figure of 432.279 million litres (12.55%) giving an average daily sales figure of 4.70 million litres. (Table 15, 16, and 17 refer)

Exploration/Drilling Activities by Company - 3rd Quarter, 2005

Table 1

COMPANY	WELL NAME	WELL TYPE	LEASE NO.	NIGERIA COORDINATES (METRES)		DATE SPUDDED	DEPTH REACHED (METRES)	MONTHLY PROGRESS (METRES)	WELL STATUS
				EAST	NORTH				
SHELL	SOKU 50	Development	N/A	N/A	N/A	06/05/2005	3,164.13	3,164.13	Suspended
	SOKU 51	Development	N/A	N/A	N/A	18/06/2005	3,118.71	3,118.71	Drilling
	SOKU 52	Development	N/A	N/A	N/A	25/06/2005	3,164.13	3,164.13	Drilling
	UTOROGU 33	Development	N/A	N/A	N/A	15/05/2005	4,600.96	4,600.96	Completed
	OBIGBO 54	Development	N/A	N/A	N/A	18/06/2005	3,207.11	3,207.11	Drilling
	JONES CREEK 37 STR	Development	N/A	N/A	N/A	N/A	164.59	164.59	Completed
MOBIL	OSO 59H	Development	OML 70	572,300.16	34,596.72	27/04/2005	4,396.00	4,396.00	Completed
	OSO 60H	Development	OML 70	572,296.83	34,595.83	07/08/2005	5,280.00	5,280.00	Completed
	OSO 61H	Development	OML 70	572,298.05	34,597.94	14/08/2005	11,433.00	11,433.00	Completed
	OSO 62D	Development	OML 70	572,576.93	32,582.17	05/09/2005	3,574.00	3,574.00	Drilling
	OSO 63H	Development	OML	572,298.94	34,594.61	24/09/2005	N/A	N/A	Drilling
	ENANGA 61A	Development	OML 67	605,872.40	22,989.70	18/08/2005	11,050.00	11,050.00	Completed
	USARI 20B	Development	OML 70	589,615.32	25,728.41	16/07/2005	2,655.00	571.00	Drilling
	USARI 21B	Development	OML 70	589,615.49	25,723.39	20/06/2005	2,868.00	2,868.00	Completed
	USARI 33C	Development	OML 70	591,932.37	26,613.97	13/05/2005	3,848.00	3,848.00	Completed
	USARI 34C	Development	OML 70	590,991.20	27,642.22	21/05/2005	3,419.00	3,419.00	Completed
	USARI 36C	Development	OML 70	572,576.93	32,582.17	16/07/2005	78.00	78.00	Drilling
	EDOP 53C	Development	OML 67	614,093.10	14,606.70	02/06/2005	2,919.00	2,919.00	Drilling
	CHEVRON	MEJI - 49H	Development	N/A	300,799.49	162,081.94	N/A	956.77	915.62
MEI - 50H		Development	N/A	300,797.00	162,081.00	N/A	929.34	888.19	Drilling
MEJI - 51H		Development	N/A	300,801.00	162,084.00	N/A	909.22	825.09	Drilling
MEJI - 52H		Development	N/A	300,802.00	162,083.00	N/A	3,489.96	3,448.81	Drilling
INDA - 8H		Development	N/A	516,049.37	38,543.40	N/A	3,474.72	3,012.95	Drilling
INDA - 9H		Development	N/A	516,049.48	38,544.23	N/A	4,351.63	3,785.92	Drilling
OKAN - 106		Development	OML90	294,915.99	171,135.62	N/A	2,261.62	2,261.62	Completed
OKAN - 107		Development	OML90	294,912.88	171,137.63	N/A	1,980.29	1,980.29	Drilling
PARABE - 44ST1		Development	N/A	267,378.83	208,923.49	N/A	2,017.17	2,017.17	Completed
MEREN - 106H		Development	N/A	275,708.00	195,609.00	N/A	461.77	195.38	Completed

Table 1 contd.

Exploration/Drilling Activities by Company - 3rd Quarter, 2005

COMPANY	WELL NAME	WELL TYPE	LEASE NO.	NIGERIA COORDINATES (METRES)		DATE SPUDDED	DEPTH REACHED (METRES)	MONTHLY PROGRESS (METRES)	WELL STATUS
				EAST	NORTH				
NAOC	IRRI 3	Development	N/A	N/A	N/A	24/04/2005	4,720.00	4,720.00	Completed
	NIMBE S-D	Development	N/A	N/A	N/A	N/A	3,643.00	3,643.00	Completed
ELF	AMKP1-29	Development	OML99	N/A	N/A	N/A	5,714.00	5,714.00	Completed
	OFON 36	Development	OML 102	N/A	N/A	N/A	2,284.00	2,284.00	Drilling
	OFON 37	Development	OML 102	N/A	N/A	N/A	1,515.00	1,515.00	Drilling
	OFON 38	Development	OML 102	N/A	N/A	N/A	1,598.00	1,598.00	Drilling
PAN OCEAN									
ADDAX	ORW - 4H	Development	OML123	45,411.04	647,254.61	11/08/2005	3,757.00	3,757.00	Completed
	ORW - 5H	Development	OML 123	45,411.48	647,257.66	23/06/2005	3,242.00	1,221.00	Completed
	OK - 11	Development	OPL 90/225	429,039.50	274,496.60	10/03/2005	3,377.00	3,377.00	Completed
	OK - 12	Development	OPL 90/225	429,060.19	274,359.12	15/08/2005	3,625.00	688.00	Drilling
	OK - 8ST1	Development	OPL 90/225	426,907.90	274,699.50	31/07/2005	3,250.00	3,250.00	Completed
	NOR - 4H	Development	OML123	42,438.67	647,257.60	17/05/2005	2,743.00	2,743.00	Suspended
	NOR - 5H	Development	OML123	45,411.47	647,254.55	20/05/2005	2,646.00	1,630.00	Completed
	NOR - 6A	Appraisal	OML 123	45,415.30	647,257.13	08/09/2005	2,240.00	1,444.00	Abandoned
	NOR - 6H	Development	OML 123	45,415.30	647,257.13	03/09/2005	3,010.00	2,936.00	Completed
	NOR - 7A	Appraisal	OML 123	46,466.69	649,500.19	01/09/2005	2,809.00	2,686.00	Abandoned
	KTN - 1X	Development	OML 123	48,798.54	657,122.96	27/09/2005	610.00	968.00	Drilling
NPDC	ABURA - 10	Development	OML65	376,705.52	158,255.00	24/09/2004	3,960.27	-	Suspended

Table 2

Summary Of Crude Oil Production By Field Compiled From Major Producing Companies' Monthly Report - 3rd Quarter, 2005

COMPANY	NUMBER OF WELLS	CRUDE OIL PRODUCTION		DAILY AVERAGE (BARREL)	% OF TOTAL PRODUCTION
		bbls	m3		
<i>JOINT VENTURE COMPANIES:</i>					
SHELL	821	73,272,801	11,649,423	805,196	34.31
MOBIL	N/A	56,897,637	9,045,985	625,249	26.64
CHEVRON	299	32,128,512	5,108,016	353,061	15.04
ELF	135	18,289,917	2,907,859	200,988	8.56
NAOC	229	17,054,315	2,711,414	187,410	7.99
TEXACO	35	1,371,476	218,047	15,071	0.64
PAN-OCEAN	26	2,262,343	359,683	24,861	1.06
Sub - Total	1,544	201,277,001	32,000,427	2,211,835	94.25
<i>PROD. SHARING COMPANIES:</i>					
ADDAX	89	6,832,170	1,086,226	75,079	291.13
Sub - Total	89	6,832,170	1,086,226	75,079	3.20
<i>INDEPENDENTS/SOLE RISK</i>					
NPDC	18	5,444,130	865,546	59,826	2.55
Sub - Total	18	5,444,130	865,546	59,826	2.55
GRAND- TOTAL	1,651	213,553,301	33,952,199	2,346,740	100.00

NOTE: This does not include information from other nine (9) indigenous and production sharing companies. Also, the figures are primary data (not fiscalised) and therefore might not completely tally with figures in Table 3.

Table 2a

Crude oil, Gas and Water Production - 3rd Quarter, 2005

Company: Shell

NAME OF FIELD	NUMBER OF WELL	QTY. OF OIL PRODUCED		QTY. OF GAS PRODUCED		QTY. OF WATER PRODUCED		API GRAVITY	GAS/OIL RATIO
		bbls	m3	m3	m3	bbls	m3		
ABURA	4	213,215	33,898	126,934	3,594,371	168,734	168,734	42.89	106.03
AFIESERE	31	942,359	149,823	582,363	16,490,686	3,508,710	3,508,710	20.35	110.07
AFREMO	4	480,413	76,379	444,743	12,593,721	283,222	283,222	35.25	164.88
AGBAYA	1	259,366	41,236	216,326	6,125,671	320,013	320,013	43.47	148.55
AJATITON	3	89,422	14,217	91,367	2,587,226	144,040	144,040	77.52	181.98
AJUJU	6	361,068	57,405	207,688	5,881,070	304,633	304,633	123.63	102.45
AKONO	1	43,086	6,850	31,596	894,699	253,019	253,019	45.82	130.61
AMUKPE	1	19,357	3,078	13,090	370,668	159,967	159,967	41.78	120.44
BATAN	8	566,061	89,996	287,385	8,137,838	848,990	848,990	20.42	90.42
BENISEDE	16	2,064,038	328,155	1,059,182	29,992,698	1,690,711	1,690,711	22.12	91.40
EGWA	15	728,066	115,753	2,684,282	76,010,411	744,571	744,571	30.14	656.66
ERIEMU	12	479,515	76,237	594,657	16,838,813	955,823	955,823	20.75	220.88
ESCRAVOS BEACH	8	647,193	102,895	592,208	16,769,465	670,464	670,464	29.36	162.98
EVWRENI	4	143,940	22,885	233,225	6,604,197	208,318	208,318	25.75	288.59
FORCADOS YOKRI	45	4,167,820	662,629	1,544,612	43,738,546	3,351,724	3,351,724	25.49	66.01
ISOKO	3	135,411	21,529	145,039	4,107,048	686,792	686,792	28.55	190.77
JONES CREEK	21	2,242,464	356,523	1,775,493	50,276,369	2,637,186	2,637,186	36.54	141.02
KANBO	8	2,221,689	353,220	1,345,253	38,093,327	545,281	545,281	32.70	107.85
KOKORI	30	1,018,005	161,850	638,340	18,075,778	3,406,509	3,406,509	37.92	111.68
OBEN	9	151,359	24,064	6,132,630	173,656,764	594,795	594,795	44.01	7,216.42
ODIDI	18	1,652,608	262,743	3,314,564	93,858,012	1,379,379	1,379,379	31.39	357.22
OGBOTOBO	9	925,860	147,200	680,059	19,257,129	2,216,624	2,216,624	25.59	130.82
OGINI	11	498,164	79,202	108,811	3,081,185	1,572,622	1,572,622	17.55	38.90
OLOMORO/OLEH	31	1,289,872	205,073	2,213,022	62,665,812	4,124,209	4,124,209	22.59	305.58
OPUKUSHI NORTH	4	257,606	40,956	188,194	5,329,061	356,923	356,923	34.12	130.12
OPOMOYO	1	797,422	126,780	1,326,945	37,574,903	313,335	313,335	45.82	296.38
OPUAMA	2	182,881	29,076	105,453	2,986,097	377,835	377,835	45.33	102.70
OPUKUSHI	14	1,910,900	303,808	1,996,605	56,537,564	2,199,108	2,199,108	29.05	186.10
ORONI	5	156,406	24,867	137,590	3,896,115	267,805	267,805	22.39	156.68
OTUMARA	36	3,533,087	561,715	1,579,580	44,728,730	2,926,339	2,926,339	25.70	79.63
OVMOR	6	1,562,516	248,420	118,258	3,348,694	1,074,673	1,074,673	47.31	13.48

Table 2a contd.

Crude oil, Gas and Water Production - 3rd Quarter, 2005 Company: Shell

NAME OF FIELD	NUMBER OF WELL	QTY OF OIL PRODUCED		QTY. OF GAS PRODUCED		QTY. OF WATER PRODUCED		API GRAVITY	GAS/OIL RATIO
		bbls	m3	mscf	m3	bbls	m3		
OWEH	8	218,275	34,703	201,677	5,710,857	813,098	813,098	25.98	164.56
SAGHARA	3	335,352	53,317	193,922	5,491,260	281,643	281,643	30.73	102.99
SAPELE	9	309,018	49,130	3,707,459	104,983,560	955,948	955,948	37.96	2,136.86
SEIBOU	3	467,488	74,325	649,761	18,399,185	598,714	598,714	34.65	247.55
TUNU	10	1,166,746	185,497	1,486,727	42,099,425	3,420,239	3,420,239	31.45	226.95
UGHELLI EAST	10	444,494	70,669	4,483,531	126,959,475	928,555	928,555	40.26	1,796.54
UGHELLI WEST	10	251,526	39,989	159,872	4,527,071	889,388	889,388	20.92	113.21
UTOROGO	15	425,070	67,581	14,918,970	422,458,236	388,101	388,101	33.82	6,251.18
UZERE EAST	10	409,128	65,046	242,676	6,871,820	1,101,079	1,101,079	20.82	105.65
UZERE WEST	11	352,520	56,046	708,693	20,067,953	1,066,303	1,066,303	23.97	358.06
ADIBAWA	11	339,835	54,029	351,497	9,953,288	590,938	590,938	24.85	184.22
ADIBAWA N/EAST	2	387,529	61,612	285,966	8,097,656	75,229	75,229	27.49	131.43
AGBADA	28	1,726,342	274,466	1,292,839	36,609,128	988,058	988,058	23.38	133.38
AHIA	5	397,580	63,210	215,868	6,112,702	263,982	263,982	36.31	96.70
AKASO	10	1,965,392	312,472	3,262,500	92,383,723	223,040	223,040	39.29	295.65
ALAKIRI	5	262,352	41,711	4,316,687	122,234,978	206,573	206,573	40.92	2,930.55
AWOBA N/WEST	1	629,268	100,045	347,698	9,845,712	63,597	63,597	27.88	98.41
AWOBA	7	3,002,391	477,341	3,370,367	95,438,177	568,946	568,946	43.80	199.94
BELEMA	11	2,606,943	414,470	1,326,700	37,567,965	141,565	141,565	31.27	90.64
BONNY	11	348,580	55,420	24,189,857	684,980,552	300,480	300,480	28.72	12,359.88
BONNY NORTH	1	509,857	81,061	247,704	7,014,197	16,129	16,129	36.87	86.53
CAWTHORNE CHANNEL	25	5,220,211	829,946	8,677,399	245,716,606	1,617,783	1,617,783	38.82	296.06
DIEBU CREEK	9	782,704	124,440	1,135,821	32,162,873	222,715	222,715	39.39	258.46
EGBEMA	3	297,264	47,261	165,940	4,698,898	44,807	44,807	41.45	99.42
EGBEMA WEST	6	452,981	72,018	462,003	13,082,470	234,620	234,620	41.74	181.66
EKULAMA	18	2,184,988	347,385	1,797,462	50,898,462	2,387,023	2,387,023	28.98	146.52

Table 2a contd.

Crude oil, Gas and Water Production - 3rd Quarter, 2005 Company: Shell

NAME OF FIELD	NUMBER OF WELL	QTY. OF OIL PRODUCED		QTY. OF GAS PRODUCED		QTY. OF WATER PRODUCED		API GRAVITY	GAS/OIL RATIO
		bbls	m3	mscf	m3	bbls	m3		
ELELENWA	2	642,339	102,124	432,506	12,247,208	620	620	39.39	119.93
ETELEBOU	7	509,549	81,012	575,286	16,290,287	422,685	422,685	34.05	201.09
GBARAN	5	385,493	61,288	960,708	27,204,224	21,378	21,378	34.21	443.87
IMO RIVER	33	2,481,089	394,461	1,083,267	30,674,709	4,287,414	4,287,414	31.55	77.76
ISIMIRI	4	327,554	52,077	422,540	11,965,002	218,933	218,933	26.44	229.76
KOLO CREEK	10	320,130	50,897	959,108	27,158,917	118,873	118,873	39.65	533.61
KRAKAMA	5	417,494	66,376	293,415	8,308,589	253,322	253,322	30.67	125.17
MINI NTA	6	1,431,864	227,648	683,077	19,342,589	83,792	83,792	39.12	84.97
NEMBE CREEK EAST	1	46,866	7,451	320,865	9,085,886	1,219	1,219	37.35	1,219.40
NEMBE CREEK	34	4,316,108	686,205	3,460,910	98,002,069	3,107,954	3,107,954	28.61	142.82
NKALI	4	201,730	32,072	1,761,164	49,870,617	90,845	90,845	40.54	1,554.94
NUN RIVER	6	581,522	92,454	554,175	15,692,490	476,221	476,221	25.24	169.73
OBELE	1	54,891	8,727	114,033	3,229,055	3,216	3,216	24.39	370.01
OBIGBO NORTH	29	1,652,282	262,691	6,962,242	197,148,762	1,068,223	1,068,223	26.30	750.50
ODEAMA CREEK	4	585,644	93,110	641,710	18,171,206	739,444	739,444	32.02	195.16
OGUTA	12	720,461	114,544	3,776,322	106,933,544	275,718	275,718	42.77	933.56
ORUBIRI	1	105,818	16,824	56,101	1,588,604	52	52	25.03	94.43
OTAMINI	3	108,297	17,218	132,537	3,753,030	57,375	57,375	20.98	217.97
RUMUEKPE	1	34,854	5,541	8,662	245,281	16,729	16,729	29.30	44.26
SANTA BARBARA	5	1,238,482	196,903	749,806	21,232,144	489,107	489,107	30.52	107.83
SANTA BARBARA SOUTH	1	36,636	5,825	64,571	1,828,447	50,571	50,571	-	313.92
SOKU	31	1,433,405	227,893	31,047,558	879,169,043	526,660	526,660	42.40	3,857.82
UBIE	3	103,732	16,492	163,231	4,622,188	140,661	140,661	26.37	280.27
UGADA	2	104,112	16,552	220,229	6,236,192	10,172	10,172	61.28	376.75
UMUECHEM	4	197,446	31,391	269,290	7,625,445	242,690	242,690	36.75	242.92
TOTAL	821	73,272,801	11,649,423	164,428,403	4,656,094,423	69,384,781	69,384,781		399.68

NOTE: Total Oil Produced includes Condensate production.

Table 2b

Crude oil, Gas and Water Production - 3rd Quarter, 2005 Company: Mobil

NAME OF FIELD	QTY. OF OIL PRODUCED		QTY. OF GAS PRODUCED		QTY. OF WATER PRODUCED		API GRAVITY	GAS/OIL RATIO
	bbls	m3	mscf	m3	bbls	m3		
ADUA	969,575	154,150	2,474,342	70,065,570	1,004,666	159,729	31.83	454.53
ASASA	4,012,034	637,861	8,282,450	234,532,892	13,999	2,226	36.83	367.69
EDOP	4,669,708	742,423	12,605,439	356,946,337	472,955	75,194	36.83	480.79
EKPE	420,817	66,904	1,392,231	39,423,595	549,734	87,401	31.83	589.25
EKPE WW	273,636	43,505	649,071	18,379,641	8,177,779	1,300,161	31.83	422.48
EKU	616,591	98,030	705,917	19,989,336	51,928	8,256	32.27	203.91
ENANG	1,726,338	274,465	2,116,790	59,940,828	370,450	58,897	32.60	218.39
ETIM/ETIMC	2,865,946	455,648	4,192,000	118,704,241	248,363	39,486	36.03	260.52
IDOHO	1,714,220	272,539	2,219,987	62,863,037	451,869	71,841	36.53	230.66
INANGA	501,067	79,663	368,088	10,423,101	423,119	67,270	36.53	130.84
INIM	767,511	122,024	459,551	13,013,034	494,531	78,624	32.60	106.64
ISOBO	129,988	20,666	16,131	456,782	-	-	32.27	22.10
IYAK	159,289	25,325	173,005	4,898,953	211,105	33,563	36.53	193.44
IYAK SE	33,803	5,374	10,457	296,110	-	-	34.97	55.10
MFEM	484,965	77,103	529,620	14,997,161	35,131	5,585	32.27	194.51
OSO	5,159,854	820,350	42,345,681	1,199,096,288	627,674	99,792	48.80	1,461.69
UBIT	6,960,217	1,106,584	8,437,131	238,912,978	1,272,306	202,280	32.27	215.90
UNAM	2,165,959	344,359	1,559,792	44,168,389	201,043	31,963	32.27	128.26
USARI	8,072,339	1,283,397	14,789,699	418,797,678	2,050,149	325,947	31.73	326.32
UTUE	328,277	52,192	895,099	25,346,391	445,513	70,831	34.97	485.64
YOHO	10,974,894	1,744,865	9,556,750	270,617,047	227,774	36,213	38.90	155.09
AWAWA	3,890,609	618,556	3,517,506	99,604,700	341	54	0.00	161.03
TOTAL	56,897,637	9,045,985	117,296,736	3,321,474,091	17,330,429	2,755,313		367.18

Table 2c

Crude oil, Gas and Water Production - 3rd Quarter, 2005
Company: Chevron

NAME OF FIELD	NUMBER OF WELL	QTY. OF OIL PRODUCED		QTY. OF GAS PRODUCED		QTY OF WATER PRODUCED		API GRAVITY	GAS/OIL RATIO
		bbls	m3	mscf	m3	bbls	m3		
ABITEYE	8	196,878	31,301	278,758	7,893,548	316,580	50,332	33.80	252.18
UTONANA	4	491,923	78,209	652,192	18,468,023	32,371	5,147	39.10	236.14
MAKARABA	11	785,801	124,932	2,067,444	58,543,502	1,219,304	193,853	29.20	468.60
JISIKE	4	385,727	61,326	445,873	12,625,719	58,704	9,333	34.17	205.88
ROBERKIRI	12	1,655,027	263,128	2,970,383	84,111,890	461,520	73,376	33.30	319.66
IDAMA	5	733,637	116,639	779,119	22,062,196	79,145	12,583	29.70	189.15
BALEMA UNIT	1	234,625	37,302	-	-	-	-	0.00	0.00
JOKKA	1	8,842	1,406	6,850	193,970	3,789	602	19.50	137.98
BENIN RIVER	-	-	-	-	-	-	-	15.03	#DIV/0!
DELTA SOUTH	19	2,095,316	333,128	4,786,653	135,542,935	918,602	146,046	38.50	406.88
DELTA	20	2,649,810	421,285	5,568,452	157,681,020	1,087,655	172,923	36.73	374.29
ISAN	3	185,685	29,522	421,105	11,924,367	112,918	17,952	36.63	403.92
WEST ISAN	4	78,503	12,481	351,188	9,944,538	182,252	28,976	36.70	796.78
EWAN	13	1,561,537	248,264	717,765	20,324,844	643,815	102,358	19.63	81.87
OKAN	54	5,515,764	876,935	19,586,065	554,615,665	1,574,193	250,276	37.20	632.45
MEFA	10	990,974	157,552	3,776,489	106,938,273	647,458	102,937	35.70	678.75
MEJI	28	4,847,695	770,720	5,295,348	149,947,575	2,336,044	371,401	31.33	194.56
MEREN	60	6,260,424	995,326	7,530,934	213,252,328	5,169,168	821,831	30.67	214.25
OKAGBA	1	25,609	4,071	52,018	1,472,986	188	30	37.60	361.78
TAPA	3	114,290	18,171	493,925	13,986,400	103,547	16,463	26.60	769.73
PARABE/EKO	16	539,462	85,767	2,250,384	63,723,786	730,234	116,098	35.93	742.98
MALU	12	842,638	133,968	2,009,479	56,902,115	481,981	76,629	38.70	424.74
MINA	1	20,331	3,232	22,125	626,510	21,900	3,482	0.00	193.82
INDA	4	879,707	139,862	375,881	10,643,766	448,617	71,324	42.77	76.10
MEJO	3	722,503	114,869	455,969	12,911,606	73,658	11,711	25.60	112.40
KITO	1	43,850	6,972	9,155	259,241	6,761	1,075	19.50	37.19
OPOLO	3	261,954	41,647	437,278	12,382,336	314,074	49,934	39.07	297.31
TOTAL	299	32,128,512	5,108,016	61,340,832	1,736,979,139	17,024,478	2,706,671		340.05

Table 2d

**Crude oil, Gas and Water Production - 3rd Quarter, 2005
Company: Elf**

NAME OF FIELD	NUMBER OF WELL	QTY. OF OIL PRODUCED		QTY. OF GAS PRODUCED		QTY. OF WATER PRODUCED		API GRAVITY	GAS/OIL RATIO
		bbls	m3	m3	m3	bbls	m3		
AGHIGHO	-	-	-	-	-	-	-	27.15	#DIV/0!
OBODO	-	-	-	-	-	-	-	27.15	#DIV/0!
OKPOKO	-	-	-	-	-	-	-	27.15	#DIV/0!
UPOMAMI	-	-	-	-	-	-	-	27.15	#DIV/0!
EREMA	1	17,650	2,806	666	18,855	77,367	12,299	33.69	6.72
OBAGI	58	1,437,230	228,501	1,393,864	39,469,832	2,354,193	374,243	33.69	172.73
OLO	4	149,771	23,812	145,778	4,127,982	427,530	67,964	33.69	173.36
IBEWA CONDENSATES	7	471,817	75,013	3,331,830	94,346,934	-	-	33.69	1,257.74
IBEWA OIL	1	32,424	5,155	96,679	2,737,633	1,272	202	33.69	531.07
OBAGI DEEP	1	81,242	12,916	420,711	11,913,219	-	-	33.69	922.33
OBAGI GAS-CAP	1	-	-	406,555	11,512,362	-	-	33.69	-
AFIA	7	466,334	74,141	112,474	3,184,914	1,285,095	204,290	39.58	42.96
EDIKAN	8	1,224,538	194,686	537,969	15,233,601	803,318	127,702	39.58	78.25
IME	7	659,187	104,802	177,604	5,029,187	1,323,859	210,452	39.58	47.99
ODUDU	4	134,896	21,447	571,394	16,180,069	410,033	65,182	39.58	754.43
OFON	16	4,361,190	693,373	3,129,224	88,609,779	149,058	23,695	39.58	127.80
AMENAMKPONO	20	9,253,639	1,471,208	19,459,770	551,039,395	365,346	58,079	39.58	374.55
TOTAL	135	18,289,917	2,907,859	29,784,519	843,403,761	7,197,071	1,144,108		290.04

Table 2e

Crude oil, Gas and Water Production - 3rd Quarter, 2005
Company: NAOC

NAME OF FIELD	NUMBER OF WELL	QTY. OF OIL PRODUCED		QTY. OF GAS PRODUCED		QTY. OF WATER PRODUCED		API GRAVITY	GAS/OIL RATIO
		bbls	m3	mscf	m3	bbls	m3		
AFUO	2	460,670	73,241	230,811	6,535,840	60,691	9,649	28.00	89.24
AGWE	2	36,208	5,757	1,676,476	47,472,519	2,016	321	53.70	8,246.62
AKRI	10	567,601	90,241	4,593,119	130,062,662	784,925	124,793	41.90	1,441.28
AZUZUAMA	3	79,232	12,597	579,913	16,421,309	154,743	24,602	36.50	1,303.60
BENIBOYE	7	480,336	76,367	883,052	25,005,251	463,334	73,664	26.00	327.43
BENIKU	2	274,656	43,667	189,509	5,366,298	10,826	1,721	44.10	122.89
CLOUGH CREEK	9	338,986	53,894	205,327	5,814,214	424,230	67,447	34.40	107.88
EBEGORO	7	493,412	78,446	2,538,338	71,877,736	46,336	7,367	34.30	916.27
EBOCHA	19	733,462	116,611	10,086,808	285,626,629	952,128	151,376	31.10	2,449.40
IDU	10	1,691,275	268,891	5,197,966	147,190,024	525,906	83,612	35.50	547.40
KWALE	12	376,804	59,907	10,604,894	300,297,193	350,859	55,782	35.80	5,012.73
MBEDE	23	844,445	134,256	16,329,723	462,406,317	640,619	101,850	40.60	3,444.22
NIMBE SOUTH	2	832,136	132,299	165,458	4,685,249	57,191	9,093	18.10	35.41
OBAMA	12	773,844	123,031	2,171,420	61,487,774	1,453,388	231,070	29.80	499.77
OBIAFU	33	1,446,395	229,958	25,791,380	730,330,639	643,344	102,283	41.80	3,175.93
OBRIKOM	12	457,265	72,699	6,507,219	184,263,944	308,221	49,003	38.50	2,534.61
ODUGRI	1	38,607	6,138	418,717	11,856,746	883	140	27.00	1,931.69
OGBAINBIRI	10	1,824,373	290,052	1,869,521	52,938,946	124,164	19,740	29.20	182.52
OGBOGENE	2	213,344	33,919	45,570	1,290,399	11,578	1,841	30.60	38.04
OKPAI	7	243,869	38,772	1,580,170	44,745,437	21,050	3,347	43.00	1,154.07
OMOKU WEST	1	72,293	11,494	627,455	17,767,549	134,257	21,345	35.30	1,545.86
OSHI	15	1,148,134	182,538	10,622,644	300,799,817	669,637	106,464	32.50	1,647.87
OSIAMA CREEK	3	487,759	77,547	171,571	4,858,350	1,505	239	26.00	62.65
PIRIGBENE	3	140,641	22,360	232,428	6,581,629	294,665	46,848	25.30	294.35
SAMABIRI EAST	6	1,033,148	164,257	1,690,219	47,861,678	19,056	3,030	35.70	291.38
TAYLOR CREEK	1	33,538	5,332	28,542	808,220	33,538	5,332	38.00	151.58
TEBIDABA	12	1,732,111	275,383	1,982,513	56,138,523	570,041	90,629	27.20	203.86
UMUORU	3	199,771	31,761	188,712	5,343,729	120,920	19,225	27.60	168.25
TOTAL	229	17,054,315	2,711,414	107,209,475	3,035,834,622	8,880,051	1,411,813		1,119.65

Table 2f

Crude oil, Gas and Water Production - 3rd Quarter, 2005
Company: Texaco

NAME OF FIELD	NUMBER OF WELL	QTY. OF OIL PRODUCED		QTY. OF GAS PRODUCED		QTY. OF WATER PRODUCED		API GRAVITY	GAS/OIL RATIO
		bbls	m3	mscf	m3	bbls	m3		
PENNINGTON	5	117,602	18,697	240,136	6,799,895	199,020	31,642	36.13	363.69
MIDDLETON	-	-	-	-	-	-	-	0.00	#DIV/0!
NORTH APOI	16	521,207	82,865	663,007	18,774,270	817,993	130,050	30.43	226.56
FUNIWA	14	732,667	116,485	917,820	25,989,771	785,834	124,937	33.63	223.12
TOTAL	35	1,371,476	218,047	1,820,963	51,563,936	1,802,847	286,629		236.48

Table 2g

Crude oil, Gas and Water Production - 3rd Quarter, 2005
Company: Pan Ocean

NAME OF FIELD	NUMBER OF WELL	QTY. OF OIL PRODUCED		QTY. OF GAS PRODUCED		QTY. OF WATER PRODUCED		API GRAVITY	GAS/OIL RATIO
		<i>bbls</i>	<i>m3</i>	<i>mscf</i>	<i>m3</i>	<i>bbls</i>	<i>m3</i>		
ASABORO SOUTH	5	449,916	71,531	426,819	12,086,170	88,390	14,053	47.7666667	168.96
OGHAREFE	7	419,498	66,695	941,567	26,662,212	79,471	12,635	45.3	399.76
OLOGBO	7	761,223	121,025	3,124,527	88,476,762	165,487	26,310	53.2666667	731.06
ONA	2	147,135	23,393	183,154	5,186,344	7,323	1,164	52.9	221.71
OSSIOMO	5	484,571	77,040	2,198,103	62,243,353	16,304	2,592	50.9	807.93
TOTAL	26	2,262,343	359,683	6,874,170	194,654,841	356,975	56,754		541.18

Table 2h

Crude oil, Gas and Water Production - 3rd Quarter, 2005
Company: Addax

NAME OF FIELD	NUMBER OF WELL	QTY. OF OIL PRODUCED		QTY. OF GAS PRODUCED		QTY. OF WATER PRODUCED		API GRAVITY	GAS/OIL RATIO
		bbls	m3	mscf	m3	bbls	m3		
ADANGA	5	263,536	41,899	1,305,304	36,962,098	208,280	33,114	29.85	882.18
ADANGA SOUTH	9	1,527,070	242,784	1,670,683	47,308,480	99,510	15,821	29.85	194.86
ADANGA SOUTH WEST	3	252,352	40,121	475,751	13,471,770	25,764	4,096	29.85	335.78
AKAM	6	98,133	15,602	635,197	17,986,778	545,405	86,712	34.34	1,152.86
BOGI	1	33,215	5,281	39,549	1,119,903	26,146	4,157	22.59	212.07
EBUGHU	8	308,554	49,056	1,996,046	56,521,735	328,804	52,276	22.59	1,152.19
EBUGHU EAST	4	440,871	70,093	170,389	4,824,880	272,118	43,263	22.59	68.84
EBUGHU NORTH EAST	6	226,437	36,001	806,977	22,851,047	707,145	112,427	27.37	634.74
EBUGHU SOUTH	2	329,708	52,419	1,085,417	30,735,590	56,093	8,918	22.59	586.34
MIMBO	2	40,025	6,363	442,458	12,529,017	28,664	4,557	32.06	1,968.90
UKPAM	6	11,947	1,899	82,269	2,329,599	90,646	14,412	89.10	1,226.48
NORTH ORON	3	301,567	47,945	173,592	4,915,579	1,253	199	29.34	102.52
ORON WEST	3	576,668	91,683	1,266,491	35,863,036	18,543	2,948	38.12	391.16
IZOMBE	9	174,636	27,765	705,410	19,974,989	831,480	132,195	36.41	719.43
OSSU	5	155,816	24,773	793,596	22,472,139	896,358	142,509	36.41	907.13
OKWORI	14	1,758,472	279,574	859,859	24,348,498	6,973	1,109	113.90	87.09
NDA	3	333,163	52,969	151,670	4,294,817	-	-	73.05	81.08
TOTAL	89	6,832,170	1,086,226	12,660,658	358,509,953	4,143,182	658,712		330.05

Table 2i

Crude oil, Gas and Water Production - 3rd Quarter, 2005
Company: NPDC

NAME OF FIELD	NUMBER OF WELL	QTY. OF OIL PRODUCED		QTY. OF GAS PRODUCED		QTY. OF WATER PRODUCED		API GRAVITY	GAS/OIL RATIO
		bbls	m3	mscf	m3	bbls	m3		
ABURA	5	293,000	46,583	226,899	6,425,071	154,480	24,560	0	137.93
OREDO	4	159,956	25,431	420,442	11,905,602	43,319	6,887	0	468.15
OZIENGBE SOUTH	1	-	-	-	-	-	-	0	#DIV/0!
OKONO/OKPOHO	9	4,991,174	793,532	4,536,580	128,461,655	2,522	401	41.2	161.89
TOTAL	18	5,444,130	865,546	5,183,922	146,792,328	200,321	31,848		169.60

Table 3

Crude Oil Production by Company, Crude Stream - 3rd Quarter, 2005

CRUDE STREAM COMPANY	Forcados Blend	Bonny Light	Brass Blend	Escravos Light	Pennington Light	Antan Blend	Amenam Blend	IMA	Qua- lboe Light	Oso Condensate	UKPOKITI	OKONO	EA Crude (af)	YOHO (af)	Amenam (af)	ABO	OBE	OKWB	Total	PERCENTAGE SHARE	
JOINT VENTURE COMPANIES:																					
SHELL	33,977,979	38,922,861	1,211,395	0	0	0	0	0	0	0	0	0	10,441,507	0	0	0	0	0	0	84,553,742	36.31
MOBIL	0	0	0	0	0	0	0	0	36,872,280	5,159,854	0	0	0	14,554,875	0	0	0	0	0	56,587,009	24.30
CHEVRON	0	3,511,838	359,936	28,230,649	0	0	0	0	0	0	0	0	0	0	0	0	0	0	0	32,102,423	13.78
ELF	0	2,189,318	0	0	0	0	6,829,289	0	0	0	0	0	0	0	9,246,119	0	0	0	0	18,264,726	7.84
NAOC/PHILLIPS	479,869	0	14,969,523	0	0	0	0	0	0	0	0	0	0	0	0	0	0	0	0	15,449,392	6.63
TEXACO	0	0	0	0	1,362,489	0	0	0	0	0	0	0	0	0	0	0	0	0	0	1,362,489	0.59
PAN - OCEAN	2,219,782	0	0	0	0	0	0	0	0	0	0	0	0	0	0	0	0	0	0	2,219,782	0.95
SUB TOTAL	36,677,630	44,624,017	16,540,854	28,230,649	1,362,489	-	6,829,289	-	36,872,280	5,159,854	-	-	10,441,507	14,554,875	9,246,119	-	-	-	-	210,539,563	90.41
PROD. SHARING COMPANIES																					
ADDAX	-	-	330,289	-	-	4,410,083	-	-	-	-	-	-	-	-	-	-	-	-	2,091,635	6,832,007	2.93
SUB TOTAL	-	-	330,289	-	-	4,410,083	-	-	-	-	-	-	-	-	-	-	-	-	2,091,635	6,832,007	2.93
SERVICE CONTRACT:																					
AENR	-	-	1,115,547	-	-	-	-	-	-	-	-	-	-	-	-	-	-	-	-	1,115,547	0.48
NAE	-	-	-	-	-	-	-	-	-	-	-	-	-	-	-	2,899,879	-	-	-	2,899,879	1.25
SUB TOTAL	-	-	1,115,547	-	-	-	-	-	-	-	-	-	-	-	-	2,899,879	-	-	-	4,015,426	1.72
INDEPENDENTS/SOLE RISK:																					
NPDC/AENR	-	-	-	-	-	-	-	-	-	-	-	4,985,007	-	-	-	-	-	-	-	4,985,007	2.14
NPDC	370,561	-	-	-	-	-	-	-	-	-	-	-	-	-	-	-	-	-	-	370,561	0.16
DUBRI	-	-	-	43,280	-	-	-	-	-	-	-	-	-	-	-	-	-	-	-	43,280	0.02
CONOIL	-	-	-	185,270	-	-	-	-	-	-	-	-	-	-	-	-	-	-	-	185,270	0.08
EPGA/CONOCO	-	-	-	-	-	-	-	-	-	-	284,932	-	-	-	-	-	-	-	-	284,932	0.12
AMNI CAVENDISH PETROLEUM	-	-	-	-	-	-	-	184,132	-	-	-	-	-	-	-	-	-	-	-	184,132	0.08
ATLAS	-	-	-	-	-	-	-	-	-	-	188,489	-	-	-	-	-	-	-	-	188,489	0.08
CONTINENTAL OIL	-	-	-	-	3,293,824	-	-	-	-	-	-	-	-	-	-	-	-	-	-	3,293,824	1.41
MONIPULO	-	-	-	-	-	1,722,909	-	-	-	-	-	-	-	-	-	-	-	-	-	1,722,909	0.74
SUB TOTAL	370,561	-	-	228,550	3,293,824	1,722,909	-	184,132	-	-	473,421	4,985,007	-	-	-	-	-	-	234,092	11,492,496	4.93
GRAND TOTAL	37,048,191	44,624,017	17,986,690	28,459,199	4,656,313	6,132,992	6,829,289	184,132	36,872,280	5,159,854	473,421	4,985,007	10,441,507	14,554,875	9,246,119	2,899,879	234,092	2,091,635	232,879,492	100.00	
PERCENTAGE SHARE	15.91	19.16	7.72	12.22	2.00	2.63	2.93	0.08	15.83	2.22	0.20	2.14	4.48	6.25	3.97	1.25	0.10	0.90	99.10		

Table 4

Crude Oil Liftings (Domestic & Export) - Third Quarter, 2005

COMPANY	NNPC LIFTINGS			COMPANY LIFTINGS	TOTAL LIFTINGS	% DISTRIBUTION
	**DOMESTIC ALLOCATION	EXPORT	NNPC TOTAL			
JVC :						
SHELL	22,827,976	22,975,073	45,803,049	27,860,442	73,663,491	
*EXXONMOBIL	3,801,245	25,617,483	29,418,728	24,796,614	54,215,342	
CHEVRONTEXACO	17,832,835	2,841,746	20,674,581	12,353,482	33,028,063	
ELF	1,945,399	6,767,145	8,712,544	20,512,198	29,224,742	
NAOC/ PHILLIPS	-	10,741,068	10,741,068	9,301,524	20,042,592	
PAN-OCEAN	-	359,464	359,464	579,251	938,715	
Sub - Total	46,407,455	69,301,979	115,709,434	95,403,511	211,112,945	90.11
PSC :						
ADDAX	-	2,643,306	2,643,306	4,351,062	6,994,368	
Sub - Total	-	2,643,306	2,643,306	4,351,062	6,994,368	2.99
SERVICE CONTRACT:						
AENR	-	-	-	290,000	290,000	
NAE	-	699,857	699,857	2,768,079	3,467,936	
Sub - Total	-	699,857	699,857	3,058,079	3,757,936	1.60
INDEPENDENT/SOLE RISK:						
NPDC	-	-	-	5,544,168	5,544,168	
CAVENDISH	-	-	-	173,234	173,234	
CONSOLIDATED	-	-	-	1,788,625	1,788,625	
CONTINENTAL	-	-	-	2,180,960	2,180,960	
DUBRI	-	-	-	30,000	30,000	
EPGA/CONOCO/EXPRESS	-	-	-	687,621	687,621	
AKRI-OGUTA	-	-	-	-	-	
AMNI	-	-	-	138,859	138,859	
Sub - Total	-	-	-	12,425,936	12,425,936	5.30
GRAND-TOTAL	46,407,455	72,645,142	119,052,597	115,238,588	234,291,185	100.00

Source: COMD

*Mobil Lifting includes 4,718,382 bbls of Oso Condensate.
19,198,129 bbls were supplied to the Refineries.

Figure 1:

Crude Oil Liftings Pie Charts: Third Quarter, 2005

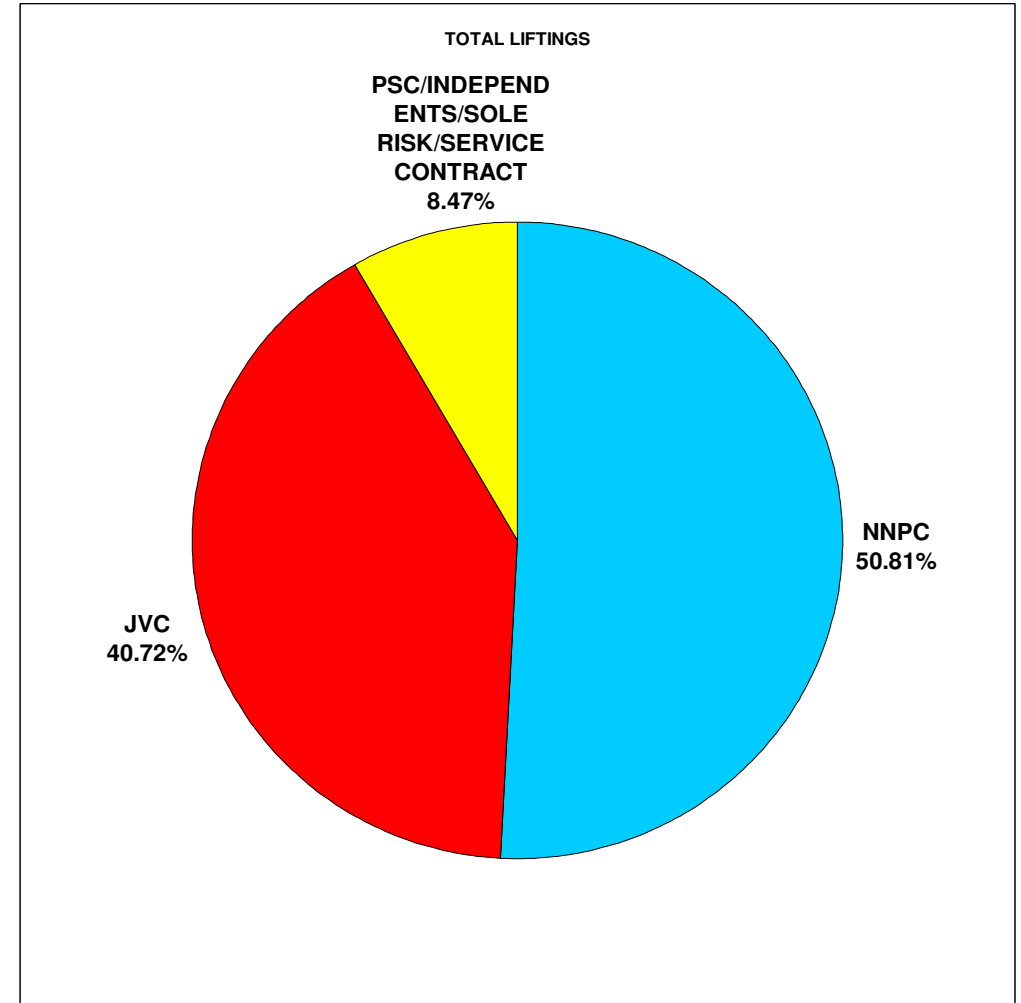
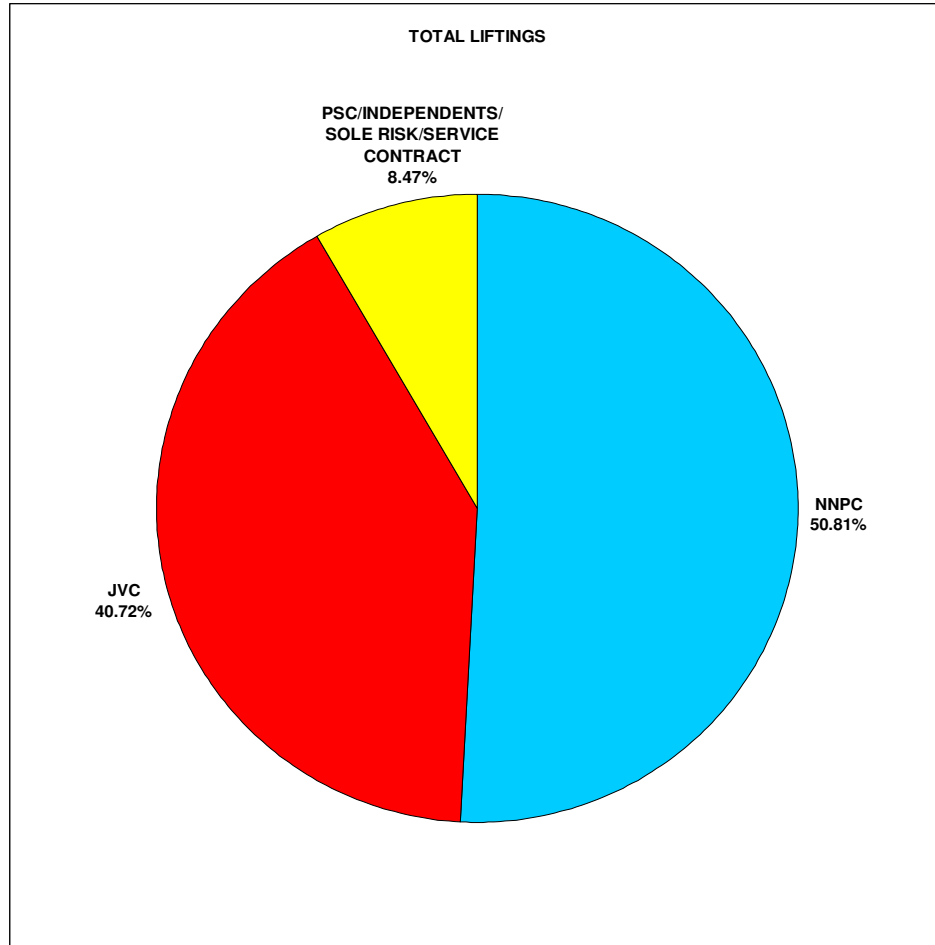


Table 5

Nigeria Crude Oil Exports by Destination - Third Quarter, 2005.

EGION/COUNTRY	QUANTITY (bbls)	% Distribuion
NORTH AMERICA:		
Canada	10,383,138	
U.S.A	88,767,921	
SUB-TOTAL: North America	99,151,059	46.10
SOUTH AMERICA:		
Argentina	-	
Brazil	8,624,319	
Uruguay	-	
Peru	949,075	
SUB-TOTAL: South America	9,573,394	4.45
CARRIBBEAN ISLAND:		
Virgin Island	-	
EUROPE:		
Germany	5,736,657	
France	8,722,497	
Italy	7,284,201	
Netherlands	8,106,942	
Portugal	5,487,623	
Spain	11,851,206	
Sweden	929,999	
United Kingdom	948,050	
Switzerland	-	
SUB-TOTAL: Europe	49,067,175	22.81
ASIA & FAR EAST:		
Australia	-	
Japan	2,141,764	
Singapore	-	
India	24,421,883	
Indonesia	3,796,756	
Korea	1,695,578	
Taiwan	-	
China	1,851,741	
New Zealand	-	
Thailand	-	
Israel	1,997,363	
SUB-TOTAL: Asia & Far East	35,905,085	16.69
AFRICA:		
Ghana	2,468,531	
Ivory Coast	8,232,438	
Senegal	798,174	
South Africa	6,842,882	
SUB-TOTAL: Africa	21,396,343	9.95
Others	-	
GRAND-TOTAL	215,093,056	100.00

Source:COMD

Figure 2: Crude Oil Exports by Destination: Third Quarter, 2005

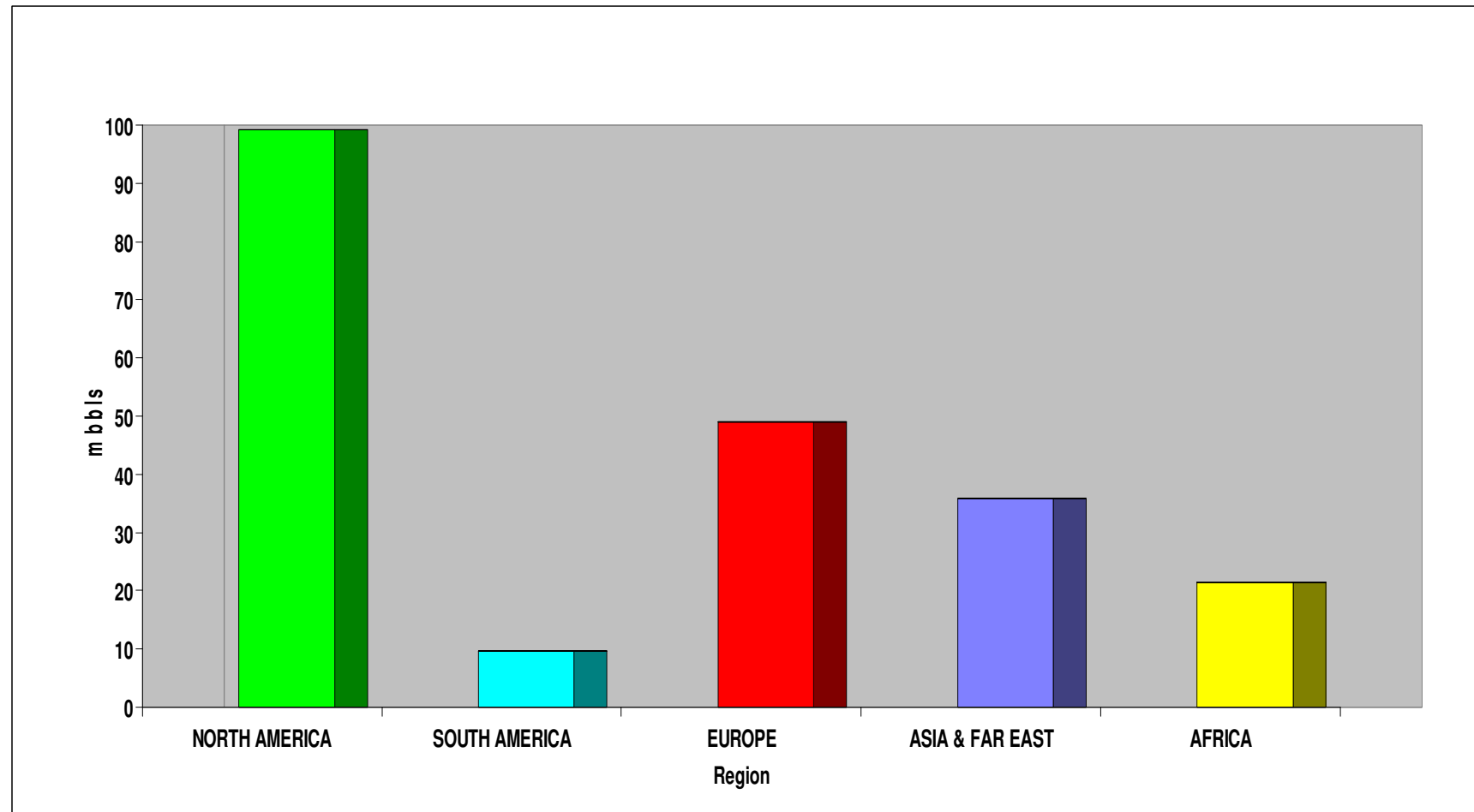


Table 6a

Federation Accounts Crude Oil Export Receipts: Third Quarter, 2005.

Crude type	Quantity	Proceeds	Average Weighted price
	(bbls)	(US Dollars)	US Dollar/Barrel
Forcados Blend	12,584,069	784,664,410.28	62.3538
Qua-Iboe Light	20,057,606	1,259,059,348.17	62.7722
Bonny Light	11,004,883	678,633,030.74	61.6665
Odudu Blend	948,733	55,323,467.43	58.3130
Abo	699,857	44,566,893.76	63.6800
Escravos Light	947,058	57,753,490.96	60.9820
Brass Blend	10,611,229	660,155,579.90	62.2129
Amenam	4,170,289	265,947,085.71	63.7719
Yoho Light	3,795,515	239,555,322.15	63.1154
Antan Blend	2,219,398	135,442,117.43	61.0265
E A Blend	1,896,411	127,194,833.73	67.0713
Pennington Light	947,145	62,020,001.75	65.4810
Oso Condensate	2,762,949	173,008,083.62	62.6172
Total	72,645,142	4,543,323,665.63	62.5413

Tabl6 6b

GAS EXPORT: Third Quarter, 2005.

Gas Sales	Producer	Quantity	Proceeds	Average Weighted Price
		(Metric Tonnes)	(Us Dollars)	(US Dollar/Metric Ton)
	Mobil (NGL)	115,213.0000	51,658,029.200	448.370
	Chevron (LPG)	29,912.7310	14,848,002.380	496.377
Sub-Total		145,125.7310	66,506,031.580	458.265
		(BTU)	(Us Dollars)	(US Dollar/BTU)
*NLNG Feedstock (Gas Sales)	Shell	39,838,972.2100	27,691,027.490	0.695
	Totalfina	7,130,650.8800	4,852,824.740	0.681
	NAOC **	21,013,749.9000	14,694,058.530	0.699
Sub-Total		67,983,372.9900	47,237,910.760	0.695
TOTAL			113,743,942.34	

NOTE: *The shares of Federal Government in the Companies

** Proceeds includes balance of \$109,170.72 from price adjustment for the period 10/02 - 09/03.

SOURCE: COMD

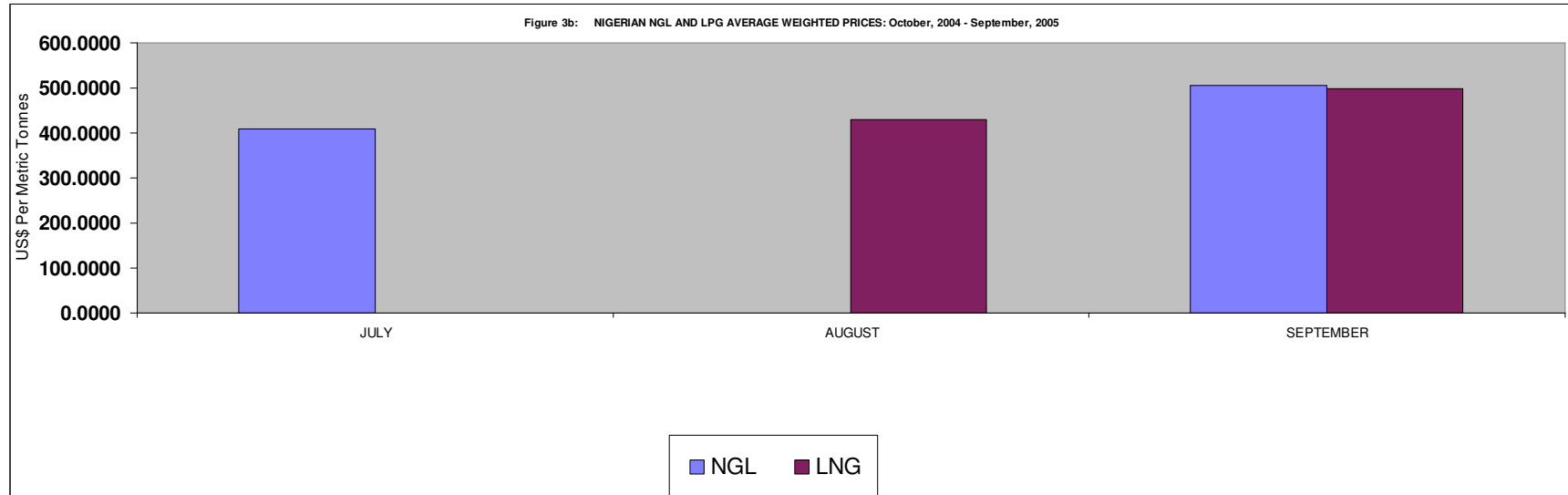
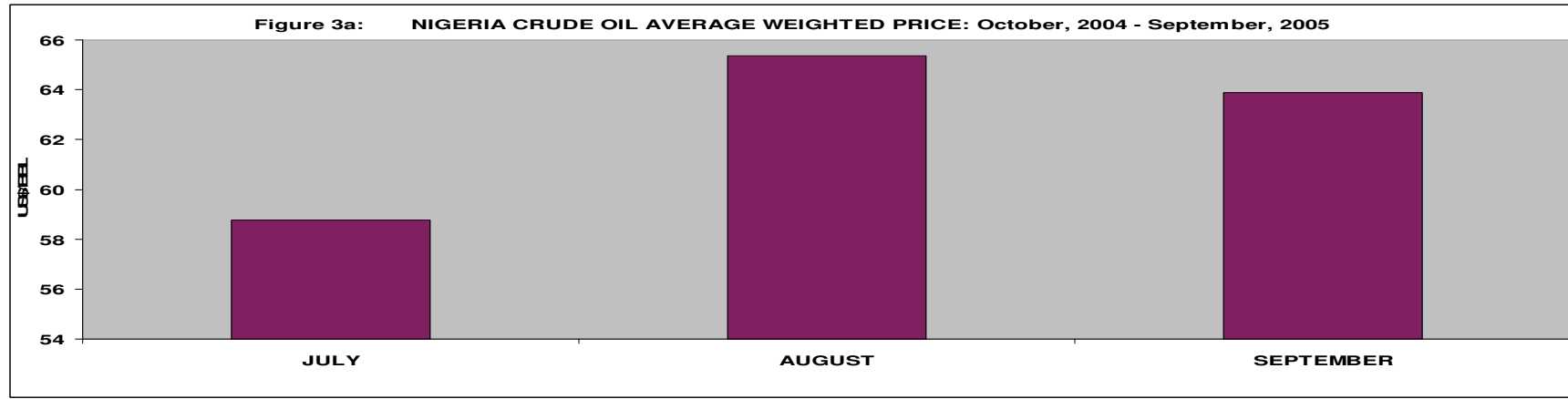


Table 7

**Summary of Gas Production and Utilization Compiled From Company's Monthly Report (mscf)
- 3rd Quarter, 2005**

<i>COMPANY</i>	<i>GAS PRODUCED</i>	<i>GAS USED AS FUEL</i>	<i>GAS SOLD TO THIRD PARTIES</i>	<i>GAS RE-INJECTED</i>	<i>FUEL GAS TO EPCL</i>	<i>GAS FOR LPG/NGL AS FEEDSTOCK TO EPCL</i>	<i>GAS FOR LNG</i>	<i>GAS LIFT</i>	<i>GAS FLARED</i>
<i>JV:</i>									
<i>SHELL</i>	164,460,005	3,644,589	101,946,207	-	-	-	-	2,143,378	56,725,831
<i>MOBIL</i>	117,296,736	4,857,000	-	42,970,870	-	12,656,000	-	1,200,000	55,432,867
<i>CHEVRON</i>	61,340,832	4,217,561	17,740,234	-	-	1,188,295	-	2,741,302	35,453,440
<i>ELF</i>	29,784,519	1,092,910	124,256	18,435,609	-	-	4,438,868	230,956	5,461,920
<i>NAOC</i>	107,209,474	4,955,534	5,387,723	20,220,299	2,385,005	1,815,579	30,004,103	1,563,896	40,877,335
<i>TEXACO</i>	1,820,963	29,164	-	-	-	-	-	-	1,791,799
<i>PAN-OCEAN</i>	6,874,170	327,341	-	-	-	-	-	-	6,546,829
<i>SUB - TOTAL</i>	488,786,700	19,124,099	125,198,420	81,626,778	2,385,005	15,659,874	34,442,971	7,879,532	202,290,021
<i>PRODUCTION SHARING COMPANY</i>									
<i>ADDAX</i>	12,660,658	360,586	-	663,228	-	-	-	1,565,134	10,071,710
<i>SUB - TOTAL</i>	12,660,658	360,586	-	663,228	-	-	-	1,565,134	10,071,710
<i>SOLE RISK/INDEPENDENTS:</i>									
<i>NPDC</i>	5,183,922	181,351	-	-	-	-	-	-	5,002,571
<i>SUB - TOTAL</i>	5,183,922	181,351	-	-	-	-	-	-	5,002,571
<i>GRAND-TOTAL</i>	506,631,279	19,666,036	125,198,420	82,290,006	2,385,005	15,659,874	34,442,971	9,444,666	217,364,301

NOTE: This does not include other indigenous and production sharing companies.

Figure 4: Gas Produced Vs Gas Flared: 3rd Quarter, 2005

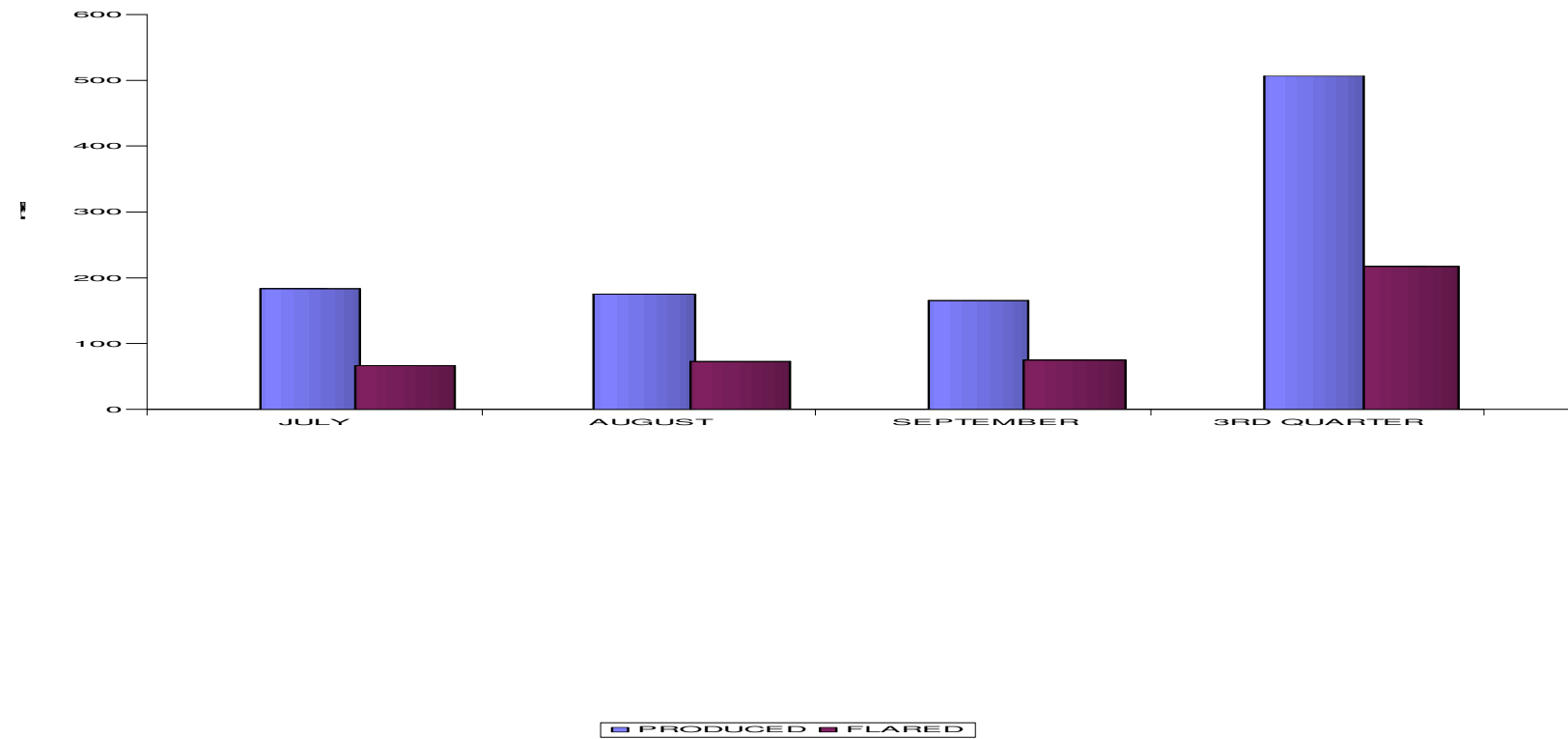


Table 7a

Gas Production and Utilization by Field (mscf) - 3rd Quarter, 2005
Company: Shell

NAME OF FIELD	GAS PRODUCED	GAS USED AS FUEL	GAS SOLD TO THIRD PARTIES	GAS RE-INJECTED	GAS LIFT	GAS FLARED
<i>AFIESERE</i>	582,363	25,655	-	-	227,032	329,676
<i>AFREMO</i>	444,743	3,194	-	-	-	441,549
<i>AGBAYA</i>	216,326	5,567	-	-	-	210,759
<i>AJATITON</i>	91,367	2,148	-	-	-	89,219
<i>AJUJU</i>	207,688	-	2,140	-	-	205,548
<i>AKONO</i>	31,596	703	-	-	-	30,893
<i>AMUKPE</i>	13,090	2,634	-	-	-	10,456
<i>BATAN</i>	287,385	-	2,730	-	-	284,655
<i>BENISEDE</i>	1,059,182	23,625	-	-	-	1,035,557
<i>EGWA</i>	2,684,282	-	1,262,320	-	-	1,421,962
<i>ERIEMU</i>	594,657	7,872	-	-	50,344	536,441
<i>ESCRAVOS BEACH</i>	592,208	4,256	-	-	-	587,952
<i>EVWRENI</i>	233,225	3,556	-	-	-	229,669
<i>FORCADOS YOKRI</i>	1,544,612	276,586	-	-	-	1,268,026
<i>ISOKO</i>	145,039	10,016	-	-	-	135,023
<i>JONES CREEK</i>	1,775,493	41,800	-	-	-	1,733,693
<i>KANBO</i>	1,345,253	32,740	-	-	-	1,312,513
<i>KOKORI</i>	638,340	26,080	-	-	117,900	494,360
<i>OBEN</i>	6,132,630	31,860	5,987,466	-	-	113,304
<i>ODIDI</i>	3,314,564	211,176	1,312,360	-	-	1,791,028
<i>OGBOTOBO</i>	680,059	17,433	-	-	-	662,626
<i>OGINI</i>	108,811	4,794	-	-	35,462	68,555
<i>OLOMORO/OLEH</i>	2,213,022	83,840	-	-	891,250	1,237,932
<i>OPUKUSHI NORTH</i>	188,194	4,528	-	-	-	183,666
<i>OPOMOYO</i>	1,326,945	29,344	-	-	-	1,297,601
<i>OPUAMA</i>	105,453	3,284	-	-	-	102,169
<i>OPUKUSHI</i>	1,996,605	47,925	-	-	-	1,948,680
<i>ORONI</i>	137,590	7,060	-	-	-	130,530
<i>OTUMARA</i>	1,579,580	27,276	-	-	152,374	1,399,930
<i>OVHOR</i>	118,258	9,895	51,493	-	-	56,870

Table 7a contd

Gas Production and Utilization by Field (mscf) - 3rd Quarter, 2005
Company: Shell

<i>NAME OF FIELD</i>	<i>GAS PRODUCED</i>	<i>GAS USED AS FUEL</i>	<i>GAS SOLD TO THIRD PARTIES</i>	<i>GAS RE-INJECTED</i>	<i>GAS LIFT</i>	<i>GAS FLARED</i>
OWEH	201,677	11,930	-	-	47,947	141,800
SAGHARA	193,922	1,533	-	-	-	192,389
SAPELE	3,707,459	27,216	3,560,104	-	38,028	82,111
SEIBOU	649,761	15,675	-	-	-	634,086
TUNU	1,486,727	36,016	-	-	-	1,450,711
UBEFAN	31,602	215	-	-	-	31,387
UGHELLI EAST	4,483,531	85,300	4,147,581	-	15,600	235,050
UGHELLI WEST	159,872	8,384	-	-	31,165	120,323
UTOROGO	14,918,970	68,435	14,376,602	-	-	473,933
UZERE EAST	242,676	3,676	-	-	66,922	172,078
UZERE WEST	708,693	13,709	-	-	53,276	641,708
WARRI RIVER	-	-	-	-	-	-
ADIBAWA	351,497	8,309	-	-	-	343,188
ADIBAWA N/EAST	285,966	6,724	-	-	-	279,242
AFAM	-	-	-	-	-	-
AGBADA	1,292,839	195,770	349,216	-	139,516	608,337
AHIA	215,868	7,035	-	-	-	208,833
AKASO	3,262,500	25,306	1,150,831	-	-	2,086,363
ALAKIRI	4,316,687	431,138	3,590,436	-	-	295,113
APARA	-	-	-	-	-	-
ASARITORU	-	-	-	-	-	-
ASSA	-	-	-	-	-	-
AWOBA N/WEST	347,698	11,410	156,854	-	-	179,434
AWOBA	3,370,367	17,283	1,807,085	-	-	1,545,999
BELEMA	1,326,700	45,680	104,150	-	-	1,176,870
BELEMA NORTH	-	-	-	-	-	-
BISENI	-	-	-	-	-	-
BONNY	24,189,857	395,005	23,589,100	-	-	205,752
BONNY NORTH	247,704	6,268	-	-	-	241,436
BUGUMA CREEK	-	-	-	-	-	-
CAWTHORNE CHANNEL	8,677,399	73,451	3,173,079	-	-	5,430,869
DIEBU CREEK	1,135,821	23,700	-	-	-	1,112,121
EGBEMA	165,940	8,550	-	-	-	157,390

EGBEMA WEST

456,892

Table 7a contd

NAME OF FIELD	GAS PRODUCED	GAS USED AS FUEL	THIRD PARTIES	INJECTED	GAS LIFT	GAS FLARED
EKULAMA	1,797,462	51,610	866,787		-	879,065
ELELENWA	432,506	35,410	105,402		-	291,694
ETELEBOU	575,286	9,754	-		-	565,532
GBARAN	960,708	6,409	129,686		-	824,613
IMO RIVER	1,083,267	51,850	-		21,575	1,009,842
ISIMIRI	422,540	6,357	-		-	416,183
KOLO CREEK	959,108	6,077	139,788		-	813,243
KRAKAMA	293,415	8,631	-		-	284,784
MINI NTA	683,077	19,721	-		-	663,356
NEMBE CREEK EAST	320,865	6,567	226,495		-	87,803
NEMBE CREEK	3,460,910	151,871	2,053,963		-	1,255,076
NKALI	1,761,164	8,267	-		-	1,752,897
NUN RIVER	554,175	22,460	-		-	531,715
OBELE	114,033	5,010	-		-	109,023
OBIGBO NORTH	6,962,242	335,149	3,646,393		254,987	2,725,713
ODEAMA CREEK	641,710	21,400	37,959		-	582,351
OGUTA	3,776,322	9,415	-		-	3,766,907
ORUBIRI	56,101	9,318	-		-	46,783
OTAMINI	132,537	2,715	-		-	129,822
RUMUEKPE	8,662	237	-		-	8,425
SANTA BARBARA	749,806	13,542	309,638		-	426,626
SANTA BARBARA SOUTH	64,571	1,568	19,743		-	43,260
SOKU	31,047,558	367,542	29,786,806		-	893,210
UBIE	163,231	5,050	-		-	158,181
UMUECHEM	269,290	5,615	-		-	263,675
TOTAL	164,460,005	3,644,589	101,946,207		2,143,378	56,725,831

Table 7b

Gas Production and Utilization by Field (mscf) - 3rd Quarter, 2005
Company: Mobil

<i>FIELD</i>	<i>GAS PRODUCED</i>	<i>GAS USED AS FUEL</i>	<i>GAS RE-INJECTED</i>	<i>GAS FOR LPG/NGL AS FEEDSTOCK TO EPCL</i>	<i>GAS LIFT</i>	<i>GAS FLARED</i>
<i>ADUA</i>	2,474,342	-	-	-	-	2,474,342
<i>ASASA</i>	8,282,450	-	-	-	-	8,282,450
<i>EDOP</i>	12,605,439	434,000	8,441,570	-	134,000	3,415,870
<i>EKPE</i>	1,392,231	813,000	10,900	-	349,000	219,331
<i>EKPE WW</i>	649,071	-	-	-	-	649,071
<i>EKU</i>	705,917	-	-	-	-	705,917
<i>ENANG</i>	2,116,790	-	-	-	-	2,116,790
<i>ETIM/ETIMC</i>	4,192,000	6,000	-	-	-	4,186,000
<i>IDOHO</i>	2,219,987	6,000	-	-	-	2,213,987
<i>INANGA</i>	368,088	-	-	-	-	368,088
<i>INIM</i>	459,551	11,000	256,400	-	-	192,151
<i>ISOBO</i>	16,131	-	-	-	-	16,131
<i>IYAK</i>	173,005	-	-	-	-	173,005
<i>IYAK SE</i>	10,457	-	-	-	-	10,457
<i>MFEM</i>	529,620	-	-	-	-	529,620
<i>OSO</i>	42,345,681	2,618,000	21,763,000	12,656,000	-	5,308,681
<i>UBIT</i>	8,437,131	197,000	-	-	-	8,240,131
<i>UNAM</i>	1,559,792	-	-	-	-	1,559,792
<i>USARI</i>	14,789,699	47,000	4,346,000	-	717,000	9,679,699
<i>YOHO</i>	9,556,750	716,000	5,836,420	-	-	3,004,330
<i>AWAWA</i>	3,517,506	-	2,316,580	-	-	1,200,926
TOTAL	117,296,736	4,857,000	42,970,870	12,656,000	1,200,000	55,432,867

FIELD	GAS PRODUCED					
	GAS USED AS FUEL	GAS SOLD TO THIRD PARTIES	GAS FOR LPG/NGL AS FEEDSTOCK TO EPCL	GAS LIFT	GAS FLARED	
ABITEYE	278,758	42,351	-	-	-	236,407
UTONANA	652,192	-	-	-	-	652,192
MAKARABA	2,067,444	15,438	-	-	604,215	1,447,791
OPUEKEBA	-	-	-	-	-	-
YORLA SOUTH	-	-	-	-	-	-
DIBI	-	-	-	-	-	-
JISIKE	445,873	276	-	-	-	445,597
ROBERKIRI	2,970,383	38,364	-	-	-	2,932,019
IDAMA	779,119	-	-	-	-	779,119
ABIGBORODO	-	-	-	-	-	-
BALEMA UNIT	-	-	-	-	-	-
JOKKA	6,850	-	-	-	-	6,850
BENIN RIVER	-	-	-	-	-	-
GBOKODA	-	-	-	-	-	-
OJUMOLE	-	-	-	-	-	-
OMURO	-	-	-	-	-	-
DELTA SOUTH	4,786,653	18,860	1,133,373	-	-	3,634,420
DELTA	5,568,452	19,964	-	-	-	5,548,488
ISAN	421,105	11,776	-	-	-	409,329
WEST ISAN	351,188	-	-	-	-	351,188
EWAN	717,765	34,224	-	-	-	683,541
OKAN	19,586,065	2,947,351	12,830,372	1,188,295	-	2,620,047
MEFA	3,776,489	-	3,776,489	-	-	-
MEJI	5,295,348	33,028	-	-	-	5,262,320
DELTA SOUTH	-	-	-	-	-	-
MEREN	7,530,934	887,910	-	-	2,137,087	4,505,937
OKAGBA	52,018	-	-	-	-	52,018
TAPA	493,925	14,812	-	-	-	479,113
PARABE/EKO	2,250,384	150,539	-	-	-	2,099,845
MALU	2,009,479	2,668	-	-	-	2,006,811
WEST ISAN	-	-	-	-	-	-
MINA	22,125	-	-	-	-	22,125
DELTA	-	-	-	-	-	-
INDA	375,881	-	-	-	-	375,881
MEJO	455,969	-	-	-	-	455,969
KITO	9,155	-	-	-	-	9,155
OPOLO	437,278	-	-	-	-	437,278
TOTAL	61,340,832	4,217,561	17,740,234	1,188,295	2,741,302	35,453,440

Table 7d

Gas Production and Utilization by Field (mscf) - 3rd Quarter, 2005
Company: Elf

<i>FIELD</i>	<i>GAS PRODUCED</i>	<i>GAS USED AS FUEL</i>	<i>GAS SOLD TO THIRD PARTIES</i>	<i>GAS RE-INJECTED</i>	<i>GAS FOR LNG</i>	<i>GAS LIFT</i>	<i>GAS FLARED</i>
OBAGI/EREMA	1,394,530	82,482	0	0	343,983	144,809	823,256
OLO	145,778	13,779	0	0	0	0	131,999
IBEWA CONDENSATES	3,331,830	143,241	0	0	3,176,991	0	11,598
IBEWA OIL	96,679	0	0	0	96,679	0	0
OBAGI DEEP	420,711	0	0	0	420,711	0	0
OBAGI GAS-CAP	406,555	0	0	0	400,504	0	6,051
AFIA	112,474	0	0	0	0	11,247	101,227
EDIKAN	537,969	0	0	0	0	0	537,969
IME	177,604	0	0	0	0	17,761	159,844
ODUDU	571,394	43,491	0	0	0	57,139	470,764
OFON	3,129,224	174,273	0	0	0	0	2,954,952
AMENAMKPONO	19,459,770	635,644	124,256	18,435,609	0	0	264,261
TOTAL	29,784,519	1,092,910	124,256	18,435,609	4,438,868	230,956	5,461,920

Table 7e

Gas Production and Utilization by Field (mscf) - 3rd Quarter, 2005
Company: NAOC

FIELD	GAS PRODUCED	GAS USED AS FUEL	GAS SOLD TO THIRD PARTIES	GAS RE-INJECTED	FUEL GAS TO EPCL	GAS FOR LPG/NGL AS FEEDSTOCK TO EPCL	GAS FOR LNG	GAS LIFT	GAS FLARED
EBOCHA FIELDS	13,141,109	223,405	-	2,238,081	-	-	-	-	10,679,623
AKRI FIELDS	6,688,308	46,000	1,134,041	590,772	-	-	-	-	4,917,495
OBR/OBI FIELDS	58,693,603	3,492,342	-	15,518,791	2,385,005	1,815,579	30,004,103	1,563,896	3,913,887
OSHI FIELDS	4,017,229	243,800	-	-	-	-	-	-	3,773,429
KWALE FIELDS	9,289,026	513,234	4,253,682	1,872,655	-	-	-	-	2,649,455
TEBIDABA FIELDS	2,562,426	30,500	-	-	-	-	-	-	2,531,926
OBAMA FIELDS	2,569,306	206,613	-	-	-	-	-	-	2,362,693
CLOUGH CREEK FIELDS	205,327	23,000	-	-	-	-	-	-	182,327
BENIBOYE FIELDS	883,052	15,640	-	-	-	-	-	-	867,412
OGBAINBIRI FIELDS	2,271,903	23,000	-	-	-	-	-	-	2,248,903
IDU FIELDS	6,888,185	138,000	-	-	-	-	-	-	6,750,185
TOTAL	107,209,474	4,955,534	5,387,723	20,220,299	2,385,005	1,815,579	30,004,103	1,563,896	40,877,335

Table 7f

Gas Production and Utilization by Field (mscf) - 3rd Quarter, 2005
Company: Texaco

<i>FIELD</i>	<i>GAS PRODUCED</i>	<i>GAS USED AS FUEL</i>	<i>GAS FLARED</i>
<i>PENNINGTON</i>	240,136	7,084	233,052
<i>MIDDLETON</i>	-	-	-
<i>NORTH APOI</i>	663,007	7,084	655,923
<i>FUNIWA</i>	917,820	14,996	902,824
<i>OKUBIE</i>	-	-	-
<i>TOTAL</i>	1,820,963	29,164	1,791,799

Table 7g

Gas Production and Utilization by Field (mscf) - 3rd Quarter, 2005
Company: Pan Ocean

<i>FIELD</i>	<i>GAS PRODUCED</i>	<i>GAS USED AS FUEL</i>	<i>GAS FLARED</i>
ASABORO SOUTH	426,819	0	426,819
OGHAREFE	941,567	0	941,567
OLOGBO	3,124,527	327,341	2,797,186
ONA	183,154	0	183,154
OSSIOMO	2,198,103	0	2,198,103
TOTAL	6,874,170	327,341	6,546,829

Table 7h

Gas Production and Utilization by Field (mscf) - 3rd Quarter, 2005
Company: Addax

FIELD	GAS PRODUCED	GAS USED AS FUEL	GAS RE-INJECTED	GAS LIFT	GAS FLARED
ADANGA	1,305,304	-	-	550,655	754,649
ADANGA SOUTH	1,670,683	-	-	-	1,670,683
ADANGA SOUTH WEST	475,751	-	-	-	475,751
AKAM	635,197	9,107	-	115,509	510,581
BOGI	39,549	-	-	-	39,549
EBUGHU	1,996,046	6,608	-	267,871	1,721,567
EBUGHU EAST	170,389	-	-	-	170,389
EBUGHU NORTH EAST	806,977	-	-	-	806,977
EBUGHU SOUTH	1,085,417	-	-	-	1,085,417
MIMBO	442,458	234,711	-	-	207,747
UKPAM	82,269	-	-	8,911	73,358
NORTH ORON	173,592	-	-	-	173,592
ORON WEST	1,266,491	-	-	-	1,266,491
IZOMBE	705,410	45,833	377,503	174,356	107,718
OSSU	793,596	-	285,725	447,832	60,039
OKWORI	859,859	40,613	-	-	819,246
TOTAL	12,660,658	360,586	663,228	1,565,134	10,071,710

Table 7i

Gas Production and Utilization by Field (mscf) - 3rd Quarter, 2005
Company: NPDC

<i>FIELD</i>	<i>GAS PRODUCED</i>	<i>GAS USED AS FUEL</i>	<i>GAS FLARED</i>
ABURA	226,899	0	226,899
OREDO	420,442	27,910	392,532
OZIENGBE SOUTH	0	0	0
OKONO/OKPOHO	4,536,580	153,441	4,383,139
TOTAL	5,183,922	181,351	5,002,571

Table 8a

'Nigerian Gas Company: Gas Sales for Third Quarter, 2005

BUYER	Quantity	Unit Price	Current Month Receivable Revenue	Revenue Received	Outstanding Debt for the Month	Payments year to date	Year to date Outstanding Debt	Outstanding Debt Since Inception
	(Bscf)	(=N=/mscf)	(=N= million)	(=N= million)	(=N= million)	(=N= million)	(=N= million)	(=N= million)
<i>Alscon Ikot Abasi</i>	0.7513	91.000	68.366	-	-	-	-	1,314.903
<i>ASCL</i>	1.9084	16.640	31.756	1.045	2.523	2.523	0.665	61.813
<i>DSCL Aladja</i>	0.2224	16.640	3.700	5.000	9.680	9.680	-	49.802
<i>NAFCON Onne</i>	0.3874	70.000	27.118	-	-	-	-	1,478.405
<i>WRPC Warri</i>	0.2482	16.640	4.130	-	-	-	-	207.208
<i>WAPCO Shagamu</i>	0.9486	438.290	415.770	147.348	1,073.031	1,073.031	147.348	1,874.154
<i>Kew Metal Works Ikorodu</i>	0.0000	328.720	-	-	-	-	-	3.555
<i>WAPCO Ewekoro</i>	0.8176	313.370	256.213	180.623	564.473	564.473	0.000	843.700
<i>GAS LINK</i>	1.5037	506.830	762.103	294.182	626.965	626.965	103.478	517.158
<i>RVSG</i>	0.2562	219.150	56.138	51.808	95.708	95.708	-	264.210
<i>NEPA ***</i>	43.7901	16.640	728.668	351.000	1328.005	1,328.005	-	7,698.849
<i>IGIL</i>	0.0000	-	-	0.500	1.000	1.000	0.250	2.000
<i>PZ Lagos Industries</i>	0.1112	410.900	45.685	11.660	119.494	119.494	11.660	47.960
<i>SPDC ABA</i>	0.0000	-	-	-	6.680	-	20.580	-
TOTAL	50.9450	-	2,399.65	1,043.166	3827.559	3,820.879	283.981	14,363.717

'Nigerian Gas Company: Gas Transmission for Third Quarter, 2005

Table 8b

CUSTOMER	Quantity	Tarrif	Current Month Receivable Revenue	Revenue Received	Outstanding Debt for the Month	Payments year to date	Year to date Outstanding Debt	Outstanding Debt Since Inception
	(mmscf)	(=N=/mscf)	(=N= million)	(=N= million)	(=N= million)	(=N= million)	(=N= million)	(=N= million)
<i>SNG Ota/Agbara</i>	0.5634	371.500	12.372	17.746	0.000	54.802	0.000	19.046
<i>**SPDC-Aba</i>	0.2108	162.800	44.385	25.727	0.230	88.618	0.000	141.495
<i>Gas Link,LIA Ikeja</i>	-	-	-	-	0.000	0.000	0.000	0.000
<i>SNG Edjeba</i>	0.1627	31.380	0.543	4.363	-	4.363	0.000	1.826
TOTAL	0.9369		57.300	47.836	0.230	147.783	0.000	162.367

Note:

Inception:- Commencement of transaction between NGC and Customer

** SPDC pays 40% of its customers' invoices as tarriff to NGC

* Customer has TOP or other contract terms that apply to its payment

Table 9a

Joint Venture Domestic Gas Sales Statistics - 3rd Quarter, 2005

BUYER	FIELD	VOLUME (scf)	PROCEEDS (=N=)
<i>Bayelsa State Utilities Board</i>	<i>Kolo Creek</i>	269,474,804	808,424
<i>Delta Glass Company</i>	<i>Ughelli East</i>	134,258,144	54,643,065
<i>Inter. Equitable Ltd</i>	<i>Imo River</i>	811,592	330,318
<i>Lever Brothers, Aba</i>	<i>Imo River</i>	38,255,748	15,570,089
<i>Nigerian Breweries</i>	<i>Imo River</i>	20,146,061	8,199,447
<i>M.O.P PH Trans Amadi Turbine</i>	<i>Obigbo North</i>	262,549,175	15,658,433
<i>NEPA, Ughelli</i>	<i>Ughelli East</i>	3,627,683,138	60,374,805
<i>NNPC - Nafcon</i>	<i>Alakiri</i>	381,674,296	4,441,162
<i>NGC - ALSCON</i>	<i>Alakiri</i>	757,710,687	22,504,007
<i>NNPC - NEPA - Sapele (Oben)</i>	<i>OBEN</i>	5,793,645,899	33,701,638
<i>NGC - NEPA - Sapele</i>	<i>SAPELE</i>	2,261,193,767	13,160,148
<i>Delta Steel Co. Aladja</i>	<i>Ughelli East</i>	385,640,783	2,243,272
<i>NNPC - Nig. Gas Co. Benin City</i>	<i>Utorogu</i>	15,595,547,488	90,719,300
<i>Pz Industries. Ltd, Aba</i>	<i>Imo River</i>	65,114,242	26,501,496
<i>Rivers State Utility Board</i>	<i>Apara</i>	367,573,980	97,241,696
<i>International Glass Ind. Aba</i>	<i>Imo River</i>	51,960,801	21,148,046
<i>NNPC-Obigbo-North-Gas-Plant</i>	<i>Obigbo North</i>	7,022,047,102	83,983,683
<i>NGC-ELEME</i>	<i>AFAM</i>	214,173,966	10,708,698
GRAND TOTAL		37,249,461,673	561,937,729.13

Table 9b

Joint Venture Domestic Gas Sales Statistics to NLNG - 3rd Quarter, 2005

SELLER	FIELD	(scf)	(US\$)
<i>Nigerian Agip Oil Company</i>	<i>Apara</i>	-	-
<i>SHELL</i>	<i>Soku</i>	72,434,494,930	50,347,322.71
GRAND TOTAL		72,434,494,930	50,347,322.71

Source: SHELL

NOTE:- This is a Total Joint Venture for NNPC (55%), SHELL (30%), ELF (10%) & AGIP (5%).

Table 10

***Refinery Production Returns:
Refinery Crude Oil Balance - Third Quarter, 2005***

	K R P C		P H R C		W R P C		T O T A L	
	Metric Tons	Barrels	Metric Tons	Barrels	Metric Tons	Barrels	Metric Tons	Barrels
<i>(1) Opening Stock</i>	174,081	1,264,767	256,647	1,884,275	42,622	315,403	473,350	3,464,445
<i>(2) Crude Oil Received</i>	500,694	3,689,631	1,125,952	8,262,331	873,196	6,461,650	2,499,842	18,413,612
<i>(3) Total Available - (1+2)</i>	674,775	4,954,398	1,382,599	10,146,606	915,818	6,777,053	2,973,192	21,878,058
<i>(4) Crude Oil Processed</i>	432,064	3,180,321	1,140,018	8,366,233	821,971	6,082,585	2,394,053	17,629,139
<i>(5) Closing Stock - (3-4)</i>	242,711	1,774,077	242,581	1,780,373	93,847	694,468	579,139	4,248,918
<i>(6) Ave. Daily Throughput</i>	4,696	34,569	12,392	90,937	8,934	66,115	26,022	191,621
<i>(7) Refinery Processing Capacity</i>		110,000		210,000		125,000		445,000

Source: Refinery Monthly Report

Fig 5:

Refinery Capacity Utilization - Third Quarter, 2005

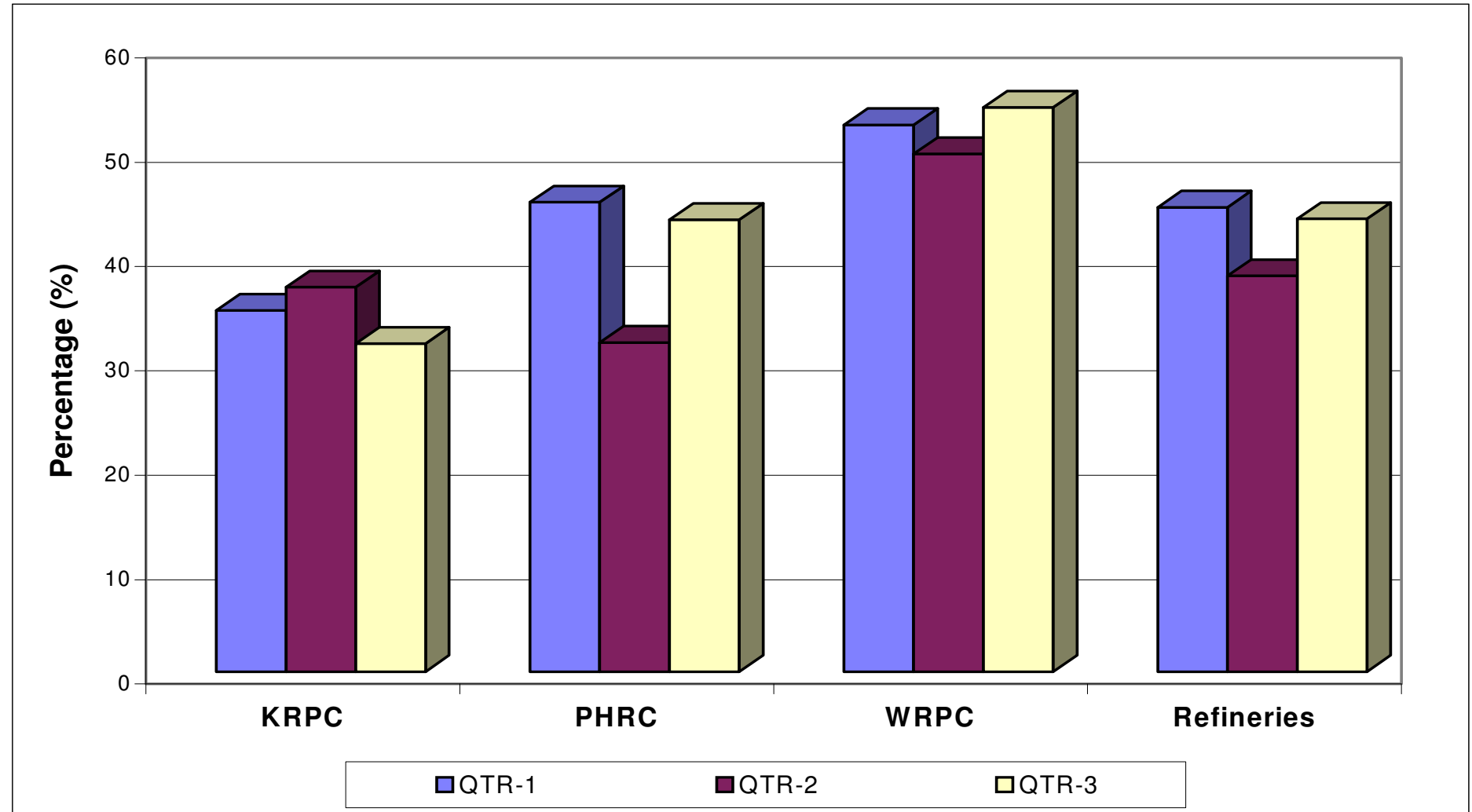


Fig 6:

Refinery Capacity Utilisation: January - September, 2005

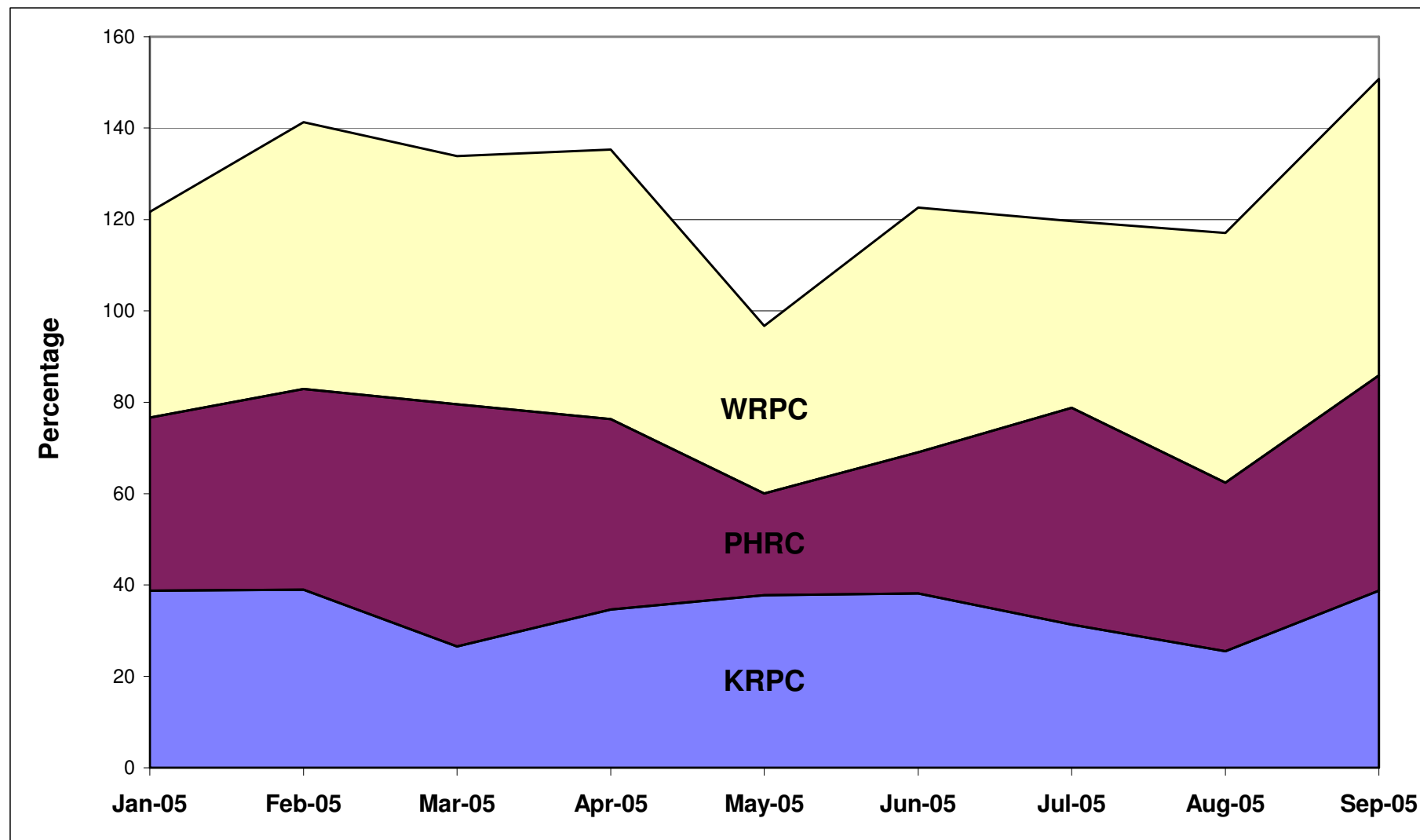


Fig 7:

Crude Oil Received Vs Processed - Third Quarter, 2005

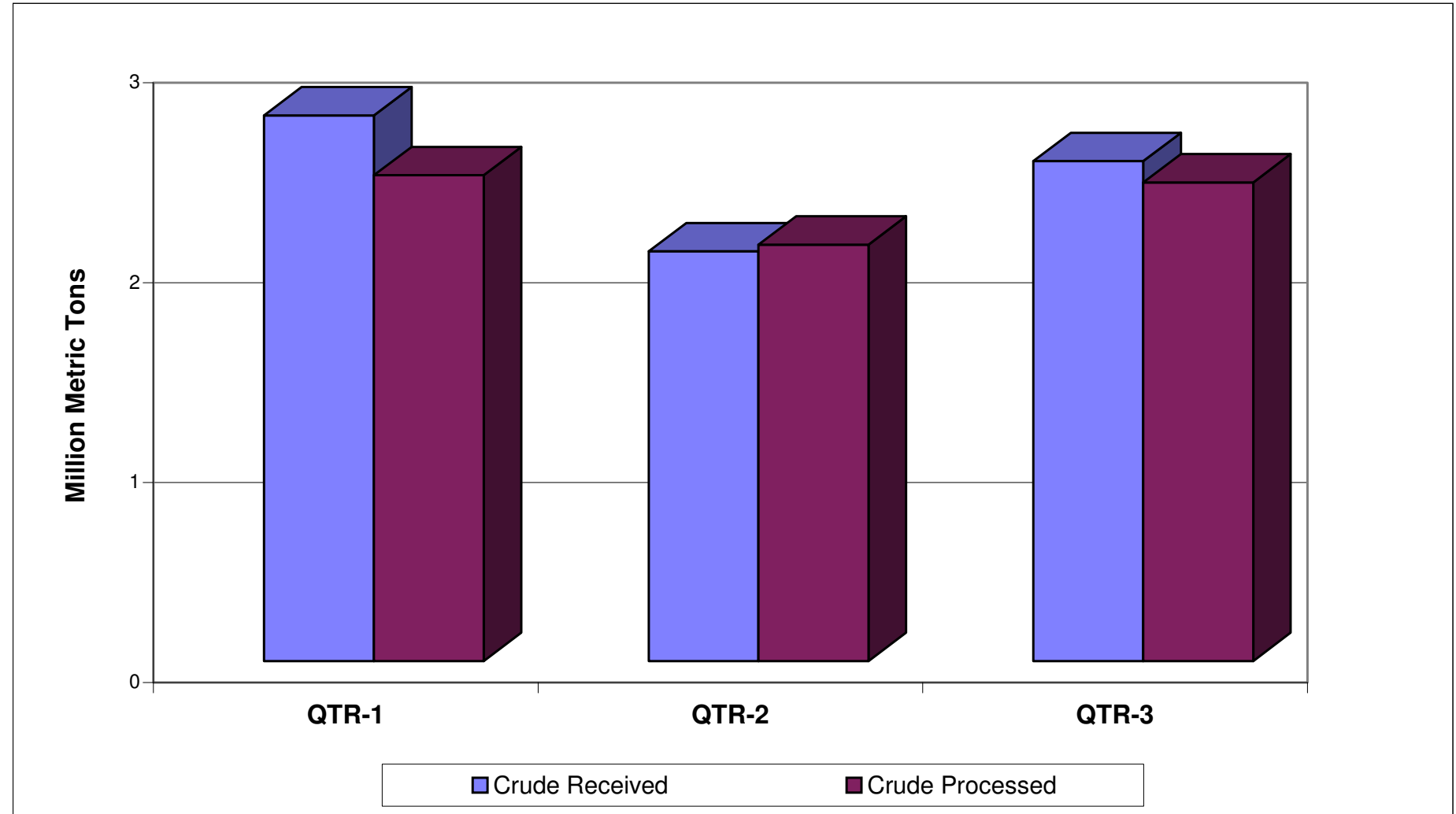


Table 11

***Refinery Production Returns:
Crude Oil Received - Third Quarter, 2005***

<i>Crude Type</i>	<i>K R P C</i>		<i>P H R C</i>		<i>W R P C</i>		<i>T O T A L</i>	
	<i>Metric Tons</i>	<i>Barrels</i>	<i>Metric Tons</i>	<i>Barrels</i>	<i>Metric Tons</i>	<i>Barrels</i>	<i>Metric Tons</i>	<i>Barrels</i>
<i>Bashra Light</i>	48,773	357,508					48,773	357,508
<i>Bonny Light</i>			1,125,952	8,262,331			1,125,952	8,262,331
<i>Escravos Light</i>	451,921	3,332,123			873,196	6,461,650	1,325,117	9,793,773
<i>Forcados Blend</i>								
<i>Total</i>	500,694	3,689,631	1,125,952	8,262,331	873,196	6,461,650	2,499,842	18,413,612

Source: Refinery Monthly Report

Fig 8:

Crude Oil Received - Third Quarter, 2005

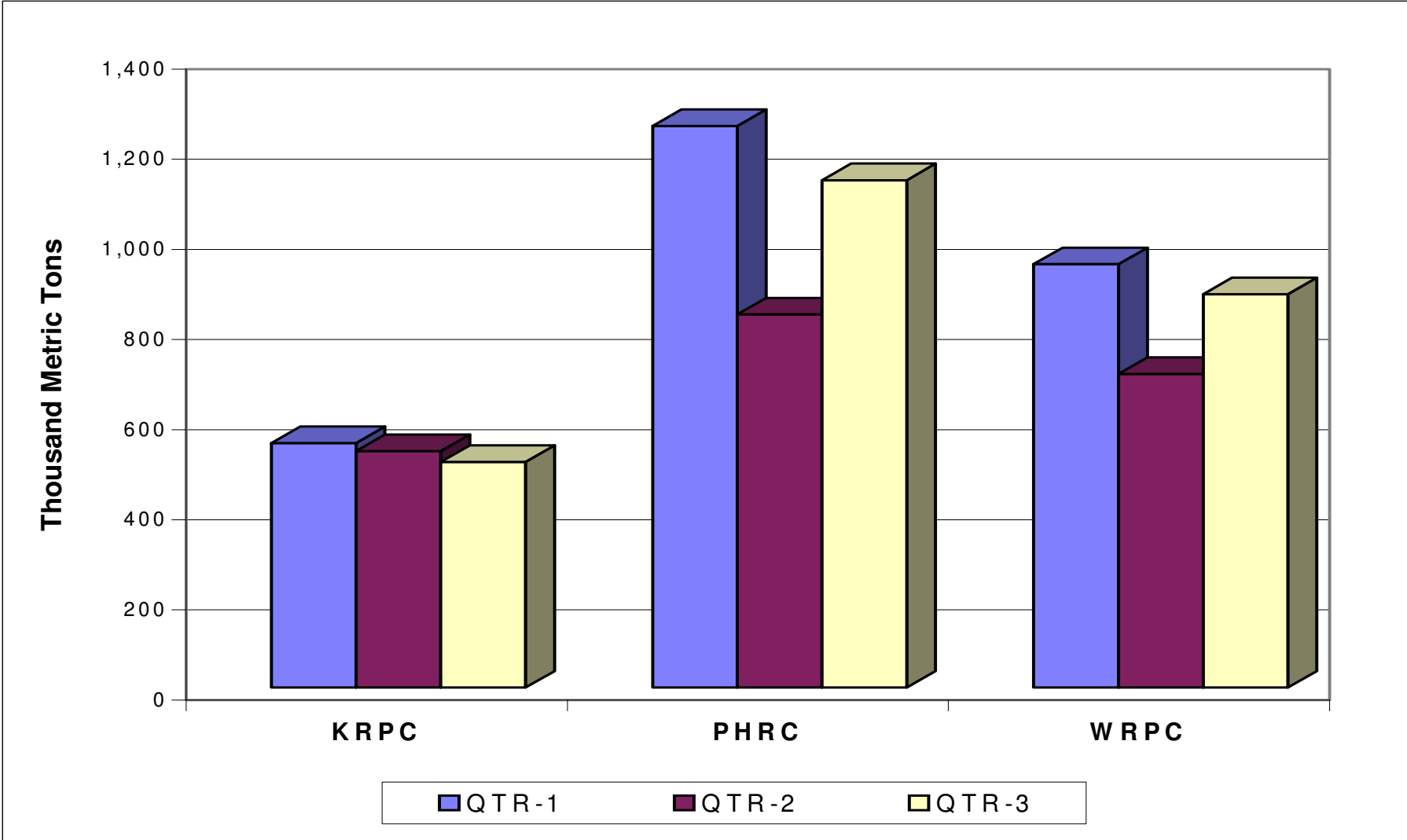


Table 12

***Refinery Production Returns:
Crude Oil Processed - Third Quarter, 2005***

<i>Crude Type</i>	<i>K R P C</i>		<i>P H R C</i>		<i>W R P C</i>		<i>T O T A L</i>	
	<i>Metric Tons</i>	<i>Barrels</i>	<i>Metric Tons</i>	<i>Barrels</i>	<i>Metric Tons</i>	<i>Barrels</i>	<i>Metric Tons</i>	<i>Barrels</i>
<i>Bashra Light</i>	44,698	324,847					44,698	324,847
<i>Bonny Light</i>			1,140,018	8,366,233			1,140,018	8,366,233
<i>Escravos Light</i>	387,366	2,855,474			821,971	6,082,585	1,209,337	8,938,059
<i>Forcados Blend</i>								
<i>Total</i>	432,064	3,180,321	1,140,018	8,366,233	821,971	6,082,585	2,394,053	17,629,139

Source : Refinery Monthly Report

Fig 9:

Crude Oil Processed - Third Quarter, 2005

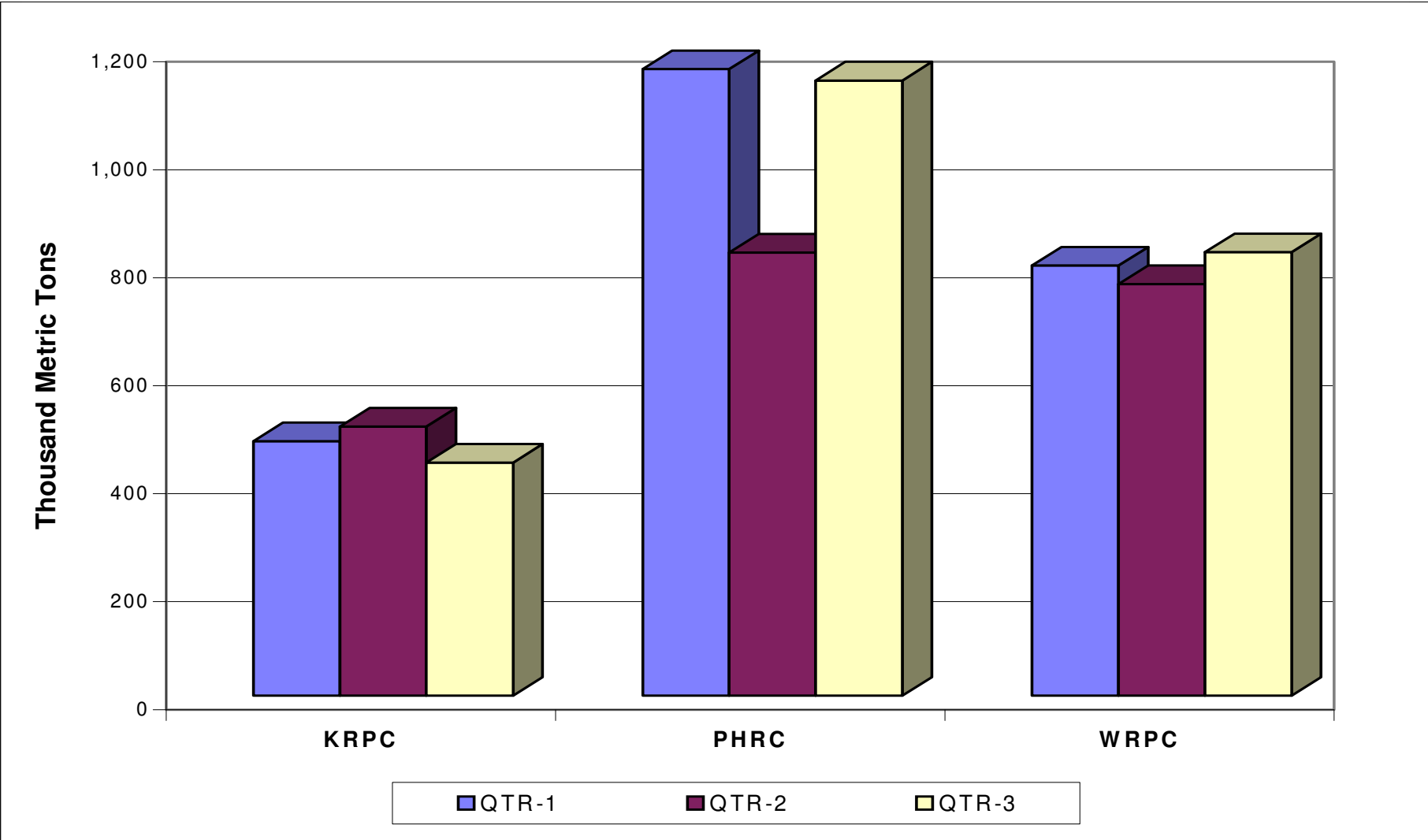


Table 13

Refinery Production Returns:
Output from Domestic Refineries - Third Quarter, 2005

(Metric Tons)

<i>Products</i>	<i>K R P C</i>		<i>P H R C</i>		<i>W R P C</i>		<i>T O T A L</i>	
	<i>Actual Production</i>	<i>Evacuation by PPMC</i>	<i>Actual Production</i>	<i>Evacuation by PPMC</i>	<i>Actual Production</i>	<i>Evacuation by PPMC</i>	<i>Actual Production</i>	<i>Evacuation by PPMC</i>
<i>LPG</i>			17,615		8,788	2,327	26,403	2,327
<i>PMS</i>	104,655	82,883	163,642	293,706	227,451	287,770	495,748	664,359
<i>DPK</i>	55,120	56,615	146,995	134,594	116,402	115,894	318,517	307,103
<i>AGO</i>	90,460	88,452	253,158	258,772	185,422	189,262	529,040	536,486
<i>Fuel Oil</i>	86,538	83,658	388,017	292,124	160,128	165,091	634,683	540,873
<i>LRS</i>	-578						-578	
<i>Asphalt</i>	689	10,601					689	10,601
<i>VGO</i>	-15,934	3,455	363				-15,571	3,455
<i>Kero-Solvent</i>	-453	1,020					-453	1,020
<i>Interm. Products</i>	47,881		62,488	73,391	32,833		143,202	73,391
<i>TOTAL</i>	368,378	326,684	1,032,278	1,052,587	731,024	760,344	2,131,680	2,139,615

Source: Refinery Monthly Report

Fig 9:

Production by Domestic Refineries - Third Quarter, 2005

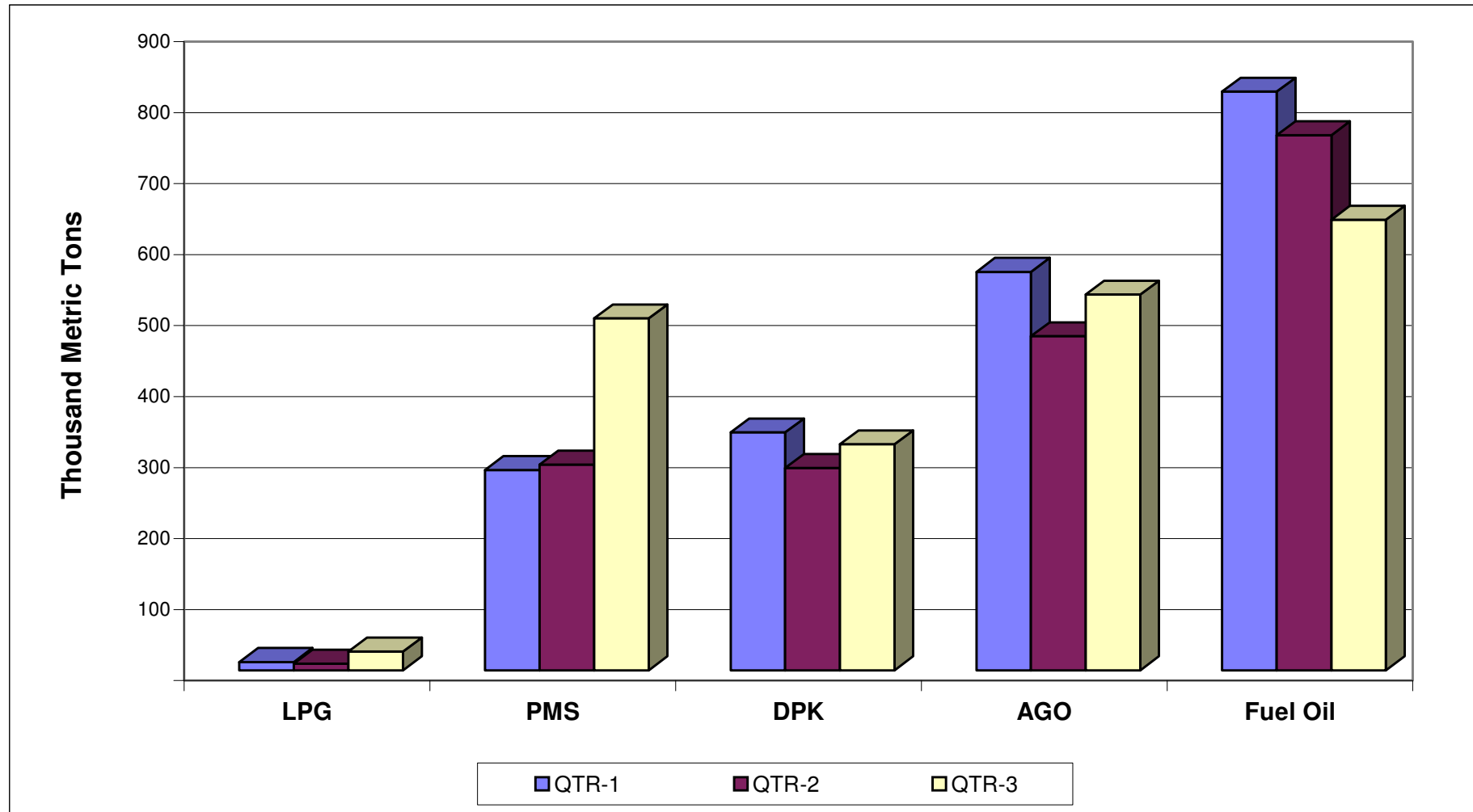


Table 14

***Refinery Fuel and Loss Statistics:
For Third Quarter, 2005***

<i>Products</i>	<i>K R P C</i>		<i>P H R C</i>		<i>W R P C</i>		<i>T O T A L</i>	
	<i>Quantity (mt)</i>	<i>% Wt. of Production</i>	<i>Quantity (mt)</i>	<i>% Wt. of Production</i>	<i>Quantity (mt)</i>	<i>% Wt. of Production</i>	<i>Quantity (mt)</i>	<i>% Wt. of Production</i>
<i>Gas</i>	5,974	1.38	42,820	3.76	25,802	3.14	74,596	3.12
<i>LPG</i>	6,605	1.53					6,605	0.28
<i>LPFO</i>	47,353	10.96	34,310	3.01	35,673	4.34	117,336	4.90
<i>Coke Burnt</i>	2,336	0.54	4,500	0.39	6,060	0.74	12,896	0.54
<i>AGO</i>					6,837	0.83	6,837	0.29
<i>R/Fuel</i>	62,268	14.41	81,630	7.16	74,372	9.05	218,270	9.12
<i>Gas/LPG Flared</i>	17,595	4.07	13,589	1.19	9,426	1.15	40,610	1.70
<i>Losses</i>	4,098	0.95	12,521	1.10	7,113	0.87	23,732	0.99
<i>R/Fuel & Loss</i>	83,961	19.43	107,740	9.45	90,911	11.06	282,612	11.80

Source: Refinery Monthly Report

Table 15

Distribution of Petroleum Products By States - Third Quarter, 2005

('000Litres)

Products	Abia	Adamawa	Akwa- Ibom	Anambra	Bauchi	Bayelsa	Benue	Borno	Cross- River	Delta	Ebonyi	Edo	Ekiti
LPG.	53		5	20	9		13		26	107	2	330	2
Super Gasoline	26,233	7,637	7,750	14,905	6,977	1,354	9,550	9,407	26,008	32,136	3,035	30,635	9,860
Household Kerosine	11,417	454	707	2,603	117	80	6,313	412	2,187	16,196	513	11,904	1,104
Aviation Turbine Kero		370					594	601	858	806			
Auto. Gas Oil	10,634	2,036	693	5,036	460	363	4,423	3,177	4,722	23,380	389	17,492	744
Low Pour Fuel Oil	66		33	66								132	
Lubricating Oils	406	236	269	529	154		294	491	302	741	26	527	102
Greases	42	1		29				3	4	3		2	
Pet. Jelly / Waxes								1					
Bitumen & Asphalts							191			1,241		1,676	
Brake Fluids				1									
Special Products													
Gas Appliances													
Chemicals	203			280						5,405			
Others (SRG)													
Total	49,055	10,733	9,457	23,469	7,717	1,797	21,378	14,092	34,107	80,015	3,965	62,698	11,812

Source: Monthly Returns from the Major Petroleum Marketing Companies and PPMC

Table 15Contd.

Distribution of Petroleum Products By States - Third Quarter, 2005

('000Litres)

Products	Enugu	Gombe	Imo	Jigawa	Kaduna	Kano	Katsina	Kebbi	Kogi	Kwara	Lagos	Nasarawa
LPG.	47	7	16		75	4	3		20	15	596	433
Super Gasoline	33,172	4,157	21,204	4,035	56,278	66,683	7,536	1,187	7,149	30,103	353,290	31,687
Household Kerosine	14,479	277	8,359	164	13,810	5,110	500	81	578	2,324	15,644	10,046
Aviation Turbine Kero	1,295				1,683	1,728					77,284	
Auto. Gas Oil	14,637	817	4,089	1,263	30,680	14,741	1,238	264	1,141	2,410	75,573	15,737
Low Pour Fuel Oil	610	2,015	66		2,180	582					2,225	1,056
Lubricating Oils	306	67	238	49	1,059	1,343	194	55	76	159	5,517	595
Greases	5		1	4	21	18			0.203	6	51	0.100
Pet. Jelly / Waxes						85					1,211	
Bitumen & Asphalts	250				739	898					274	5
Brake Fluids					2	219					459	1
Special Products												
Gas Appliances												
Chemicals	10					417					3,103	0.230
Others (SRG)												
Total	64,811	7,340	33,973	5,515	106,527	91,826	9,471	1,587	8,964	35,018	535,228	59,562

Source: Monthly Returns from the Major Petroleum Marketing Companies and PPMC

Table 15Contd.

Distribution of Petroleum Products By States - Third Quarter, 2005

('000Litres)

Products	Niger	Ogun	Ondo	Osun	Oyo	Plateau	Rivers	Sokoto	Taraba	Yobe	Zamfara	Abuja	* Indpdt Mketr Liftings	Total Sold
LPG.	4	11	14	19	117	36	8					319		2,311
Super Gasoline	18,130	62,734	29,070	15,602	64,702	22,743	92,351	6,007	1,886	8,844	3,941	72,348	855,496	2,055,823
HHK	618	6,010	2,901	1,336	8,625	524	21,315	183	38	744	299	2,856	261,450	432,279
ATK					20		3,808	198				3,478		92,722
Auto. Gas Oil	5,498	9,027	4,935	1,543	10,732	3,524	53,063	2,812	667	1,798	752	16,271	371,353	718,113
LPFO		281			177		66	778				33	81,911	92,278
Lubricating Oils	217	690	319	157	749	435	2,362	228	30	95	107	901		20,025
Greases	1	3	2	0.020	6		11	4				9		225.616
Pet. Jelly / Waxes														1,297
Bitumen & Asphalts		165	440		2,040	203	1,506	25				3,768	3,832	17,254
Brake Fluids	0.050	9	0.060		0.070	0.090	47	0.030		0.140		1		739.170
Special Products														
Gas Appliances														
Chemicals					144		171							9,733
Others (SRG)													1,731	1,731
Total	24,469	78,930	37,680	18,657	87,312	27,466	174,709	10,235	2,621	11,481	5,099	99,984	1,575,773	3,444,531

*: Liftings by Independent marketers are not indicated by states and the figures are provisional.

Source: Monthly Returns from the Major Petroleum Marketing Companies and PPMC

Table 16

Petroleum Products Distribution By Marketing Company - Third Quarter, 2005

('000Litres)

Products	African Petroleum	Conoil	Mobil	NNPC Retail Outlet	Texaco	Total	Oando	Major Marketers Sub-total	Independent Marketers	Total Distribution	% Distr.
LPG.	505					1,172	634	2,311		2,311	0.07
Super Gasoline	22,852	150,984	150,483	40,601	146,037	348,695	340,675	1,200,326	855,496	2,055,823	59.68
Household Kerosine	1,520	24,809	4,938	10,696	32,034	45,857	50,975	170,829	261,450	432,279	12.55
Aviation Turbine Kero		41,674	10,830		13,999		26,219	92,722		92,722	2.69
Auto. Gas Oil	6,688	41,171	16,450	13,400	40,019	116,778	112,253	346,760	371,353	718,113	20.85
Low Pour Fuel Oil		858			2,212	3,969	3,328	10,367	81,911	92,278	2.68
Lubricating Oils	546		4,787		1,562	10,350	2,781	20,025		20,025	0.58
Greases	1				220		5	225.616		225.616	0.01
Pet. Jelly / Waxes			1,297					1,297		1,297	0.04
Bitumen & Asphalts			159			13,220	44	13,423	3,832	17,254	0.50
Brake Fluids			734				5	739		739	0.02
Special Products											0.00
Gas Appliances											0.00
Chemicals			1,394				8,339	9,733		9,733	0.28
Others (SRG)									1,731	1,731	0.05
Total	32,112	259,496	191,072	64,697	236,082	540,041	545,258	1,868,759	1,575,773	3,444,531	100.00
% Market Share	0.93	7.53	5.55	1.88	6.85	15.68	15.83	54.25	45.75	100.00	

Source: Monthly Returns from the Major Petroleum Marketing Companies and PPMC

Table 17

Distribution of Petroleum Products by Zones
For Third Quarter, 2005

'000Litres

Products	South West	South East	South South	North West	North East	North Central	Abuja	Total
LPG.	760	137	475	7	16	597	319	2,311
Super Gasoline	942,238	163,709	435,064	89,394	38,908	314,161	72,348	2,055,823
Household Kerosine	122,187	71,294	134,389	8,382	2,392	90,779	2,856	432,279
Aviation Turbine Kero	77,304	1,295	5,472	1,926	971	2,277	3,478	92,722
Auto. Gas Oil	109,457	65,285	338,639	25,557	11,945	150,957	16,271	718,113
Low Pour Fuel Oil	2,683	808	231	1,360	2,015	85,147	33	92,278
Lubricating Oils	7,534	1,506	4,201	1,976	1,072	2,835	901	20,025
Greases	62	78	20	26	3	27	9	226
Pet. Jelly / Waxes	1,211	-	-	85	1	-	-	1,297
Bitumen & Asphalts	2,920	250	4,423	923	0.200	4,970	3,768	17,254
Brake Fluids	468	1	47	219	0.150	3	1	739
Special Products	-	-	-	-	-	-	-	
Gas Appliances	-	-	-	-	-	-	-	
Chemicals	3,247	493	5,576	417	-	0.230	-	9,733
Others (SRG)	-	-	1,727	-	-	4	-	1,731
Total	1,270,070	304,856	930,266	130,271	57,325	651,759	99,984	3,444,531
% Distribution	36.87	8.85	27.01	3.78	1.66	18.92	2.90	100.00

Source: Monthly Returns from the Major Petroleum Companies and PPMC.

Fig 10:

Petroleum Products Distribution by Zones - Third Quarter, 2005

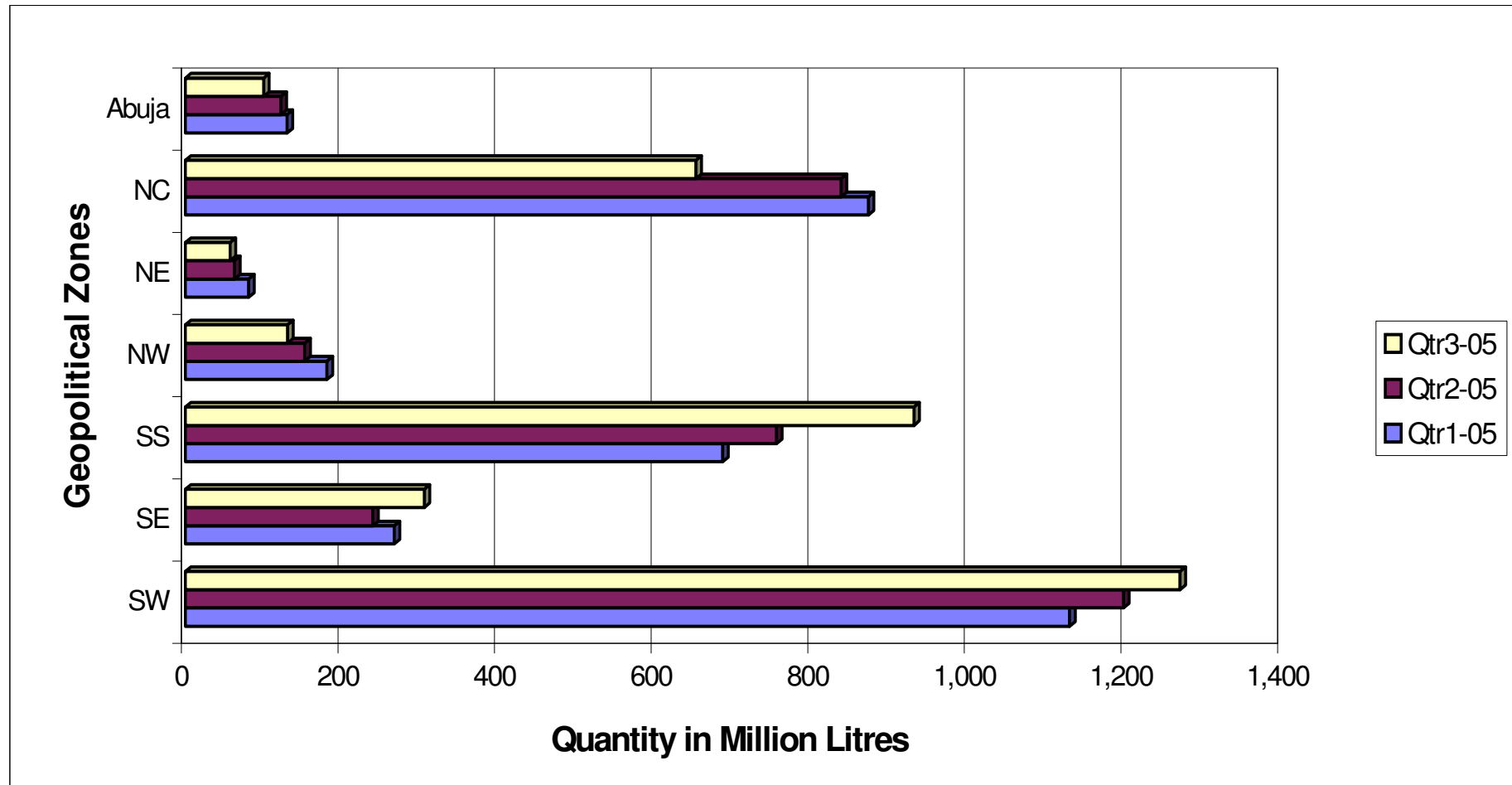
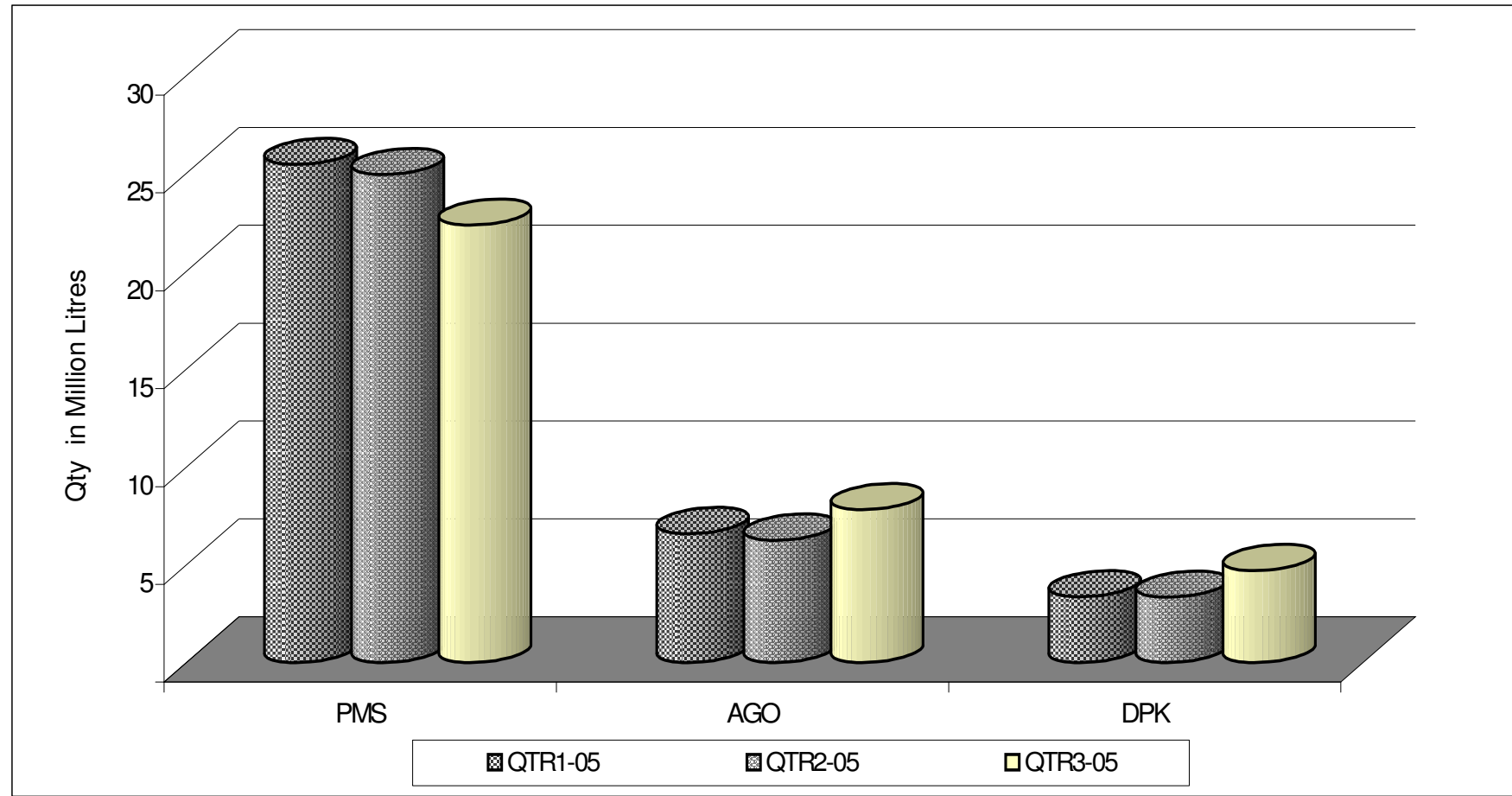
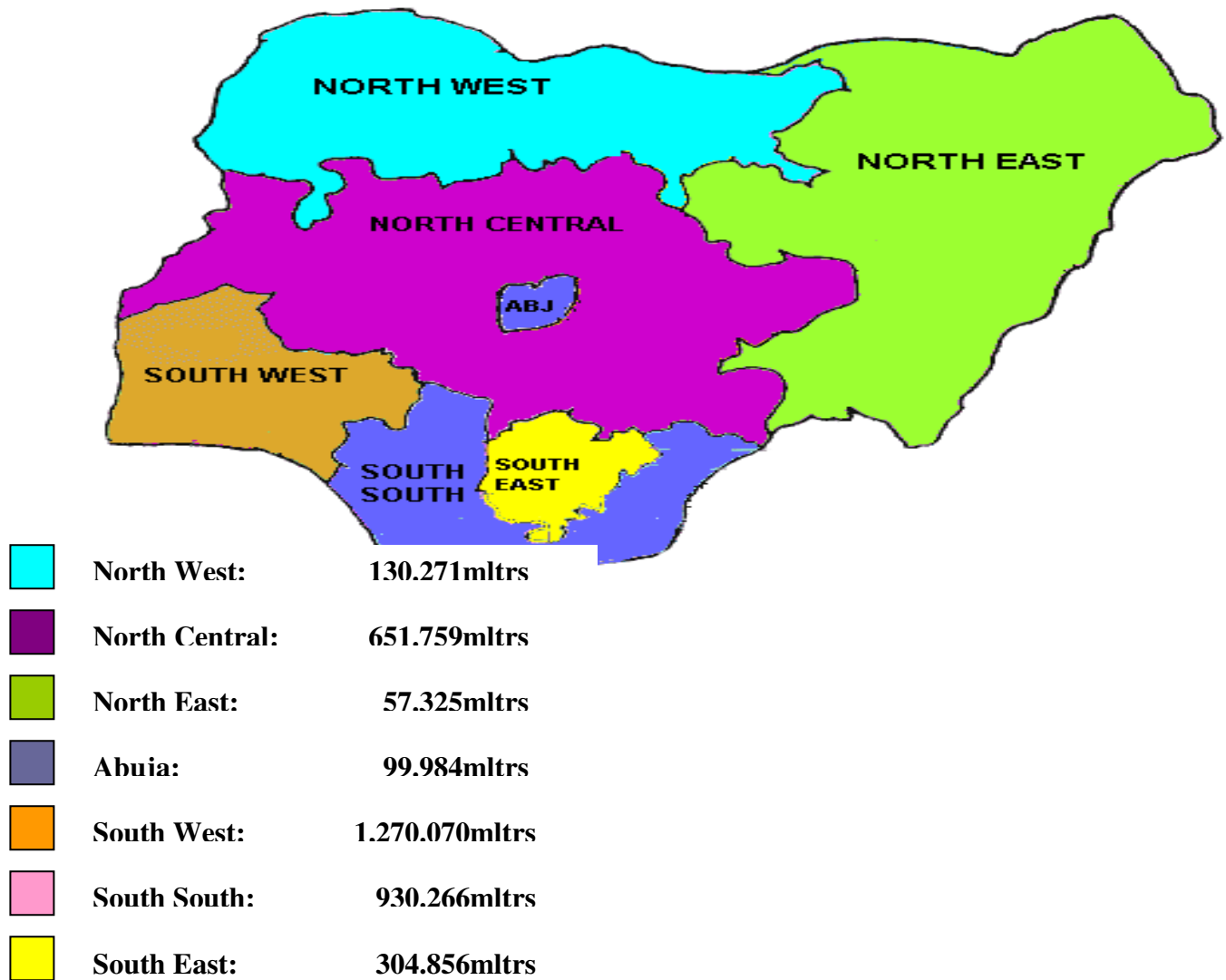


Fig 11:

Average Daily Distribution of Petroleum Products - Third Quarter, 2005



**Fig 13: Petroleum Products Distribution by Zones in Nigeria
Third Quarter, 2005**



GLOSSARY OF TERMS

AGO	Automotive Gas Oil
API	American Petroleum Institute
ATK	Aviation Turbine Kerosene
AENR	Agip Energy and Natural Resources
b/d	Barrels/Day
Bscf	Billion Standard Cubic Feet
C ₃	Propane
C ₄	Butane
CO	Company
DPK	Dual Purpose Kerosene
EPCL	Eleme Petrochemical Company Limited
HHK	House Hold Kerosene
HPFO	High Pour Fuel Oil
JVC	Joint Venture Company
KRPC	Kaduna Refining and Petrochemical Company
LPFO	Low Pour Fuel Oil
LRS	Long Residues
LPG	Liquefied Petroleum Gas
Ltd	Limited
M ³	Cubic Metres
Mbbls	Million Barrels
mmscf	Million standard Cubic Feet
N/A	Not Available
NAFCON	National Fertilizer Company of Nigeria
PPU	Power Plant Unit
Naoc	Nigerian Agip Oil Company
Nepa	National Electric Power Authority
Ngc	Nigerian Gas Company
NGL	Natural Gas Liquids
NNPC	Nigerian National Petroleum Corporation
NPDC	Nigerian Petroleum Development Company (A Subsidiary Of NNPC)
Oml	Oil Mining Lease
Opl	Oil Prospecting Lincence
Petrochem.	Petrochemical Products
Pet. Jelly	Petroleum Jelly
PHRC	Port Harcourt Refining Company
PMS	Premium Motor Spirit
PPMC	Pipelines and Products Marketing Company Limited
PSC	Production Sharing Contract
PZ	Paterson Zochonis
QTY	Quantity
nR/Fuel	Refinery Fuel
W/O	Work Over
WRPC	Warri Refining and Petrochemical Company
('000bbls)	Thousand Barrels
('000mt)	Thousand Metric Tons
MD	Measured Depth
TVD	True Vertical Depth
SCF	Standard Cubic Feet
HOG	High Octane Gasoline
BTU	British Thermal Unit